

Datasheet for ABIN657147
anti-TRA2A antibody (AA 153-182)[Go to Product page](#)

1 Image

Overview

Quantity:	400 µL
Target:	TRA2A
Binding Specificity:	AA 153-182
Reactivity:	Human
Host:	Rabbit
Clonality:	Polyclonal
Application:	Western Blotting (WB)

Product Details

Immunogen:	This TRA2A antibody is generated from rabbits immunized with a KLH conjugated synthetic peptide between 153-182 amino acids from the Central region of human TRA2A.
Clone:	RB33028
Isotype:	Ig Fraction
Predicted Reactivity:	M
Purification:	This antibody is purified through a protein A column, followed by peptide affinity purification.

Target Details

Target:	TRA2A
Alternative Name:	TRA2A (TRA2A Products)
Background:	This gene is a member of the transformer 2 homolog family and encodes a protein with two RS

Target Details

domains and an RRM (RNA recognition motif) domain. This phosphorylated nuclear protein binds to specific RNA sequences and plays a role in the regulation of pre-mRNA splicing. Several alternatively spliced transcript variants of this gene have been described, however, the full-length nature of some of these variants has not been determined. [provided by RefSeq].

Molecular Weight: 32689

NCBI Accession: [NP_037425](#)

UniProt: [Q13595](#)

Application Details

Application Notes: WB: 1:1000

Restrictions: For Research Use only

Handling

Format: Liquid

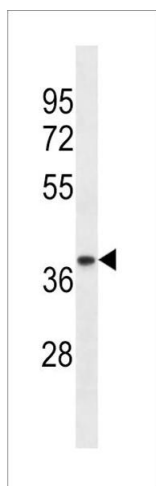
Buffer: Purified polyclonal antibody supplied in PBS with 0.09 % (W/V) sodium azide.

Preservative: Sodium azide

Precaution of Use: This product contains Sodium azide: a POISONOUS AND HAZARDOUS SUBSTANCE which should be handled by trained staff only.

Storage: 4 °C, -20 °C

Expiry Date: 6 months



Western Blotting

Image 1. Western blot analysis of lysate from human ovary tissue lysate, using TRA2A Antibody (Center) (ABIN657147 and ABIN2846283). (ABIN657147 and ABIN2846283) was diluted at 1:1000 at each lane. A goat anti-rabbit IgG H&L(HRP) at 1:5000 dilution was used as the secondary antibody. Lysate at 35 µg per lane.