

Datasheet for ABIN657152
anti-SGPP1 antibody (N-Term)



[Go to Product page](#)

6 Images

Overview

Quantity:	400 µL
Target:	SGPP1
Binding Specificity:	AA 13-42, N-Term
Reactivity:	Human
Host:	Rabbit
Clonality:	Polyclonal
Conjugate:	This SGPP1 antibody is un-conjugated
Application:	Western Blotting (WB), Immunohistochemistry (Paraffin-embedded Sections) (IHC (p))

Product Details

Immunogen:	This SGPP1 antibody is generated from rabbits immunized with a KLH conjugated synthetic peptide between 13-42 amino acids from the N-terminal region of human SGPP1.
Clone:	RB33048
Isotype:	Ig Fraction
Purification:	This antibody is purified through a protein A column, followed by peptide affinity purification.

Target Details

Target:	SGPP1
Alternative Name:	SGPP1 (SGPP1 Products)
Background:	Sphingosine-1-phosphate (S1P) is a bioactive sphingolipid metabolite that regulates diverse

Target Details

biologic processes. SGPP1 catalyzes the degradation of S1P via salvage and recycling of sphingosine into long-chain ceramides (Mandala et al., 2000 [PubMed 10859351], Le Stunff et al., 2007 [PubMed 17895250]).[supplied by OMIM].

Molecular Weight: 49108

NCBI Accession: [NP_110418](#)

UniProt: [Q9BX95](#)

Application Details

Application Notes: WB: 1:1000. WB: 1:1000. WB: 1:1000. IHC-P-Leica: 1:500. IHC-P-Leica: 1:500. IHC-P: 1:10~50

Restrictions: For Research Use only

Handling

Format: Liquid

Buffer: Purified polyclonal antibody supplied in PBS with 0.09 % (W/V) sodium azide.

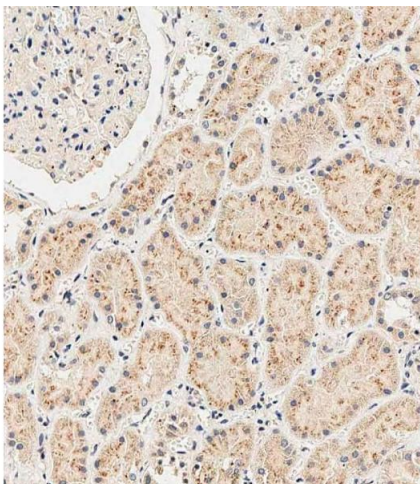
Preservative: Sodium azide

Precaution of Use: This product contains Sodium azide: a POISONOUS AND HAZARDOUS SUBSTANCE which should be handled by trained staff only.

Storage: 4 °C,-20 °C

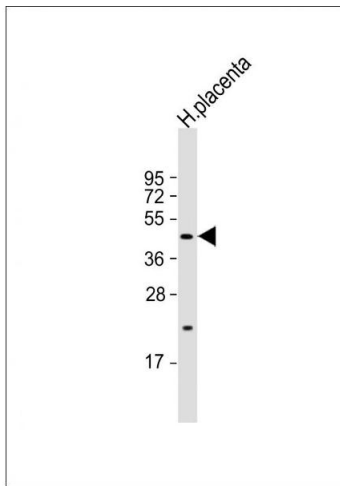
Expiry Date: 6 months

Images



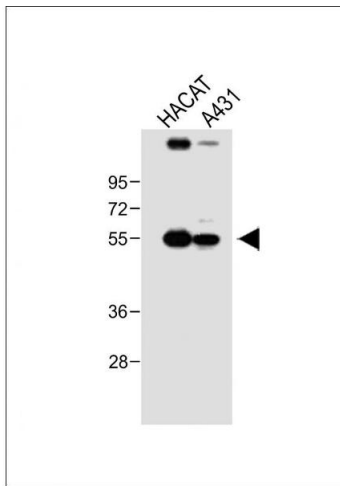
Immunohistochemistry (Paraffin-embedded Sections)

Image 1. Immunohistochemical analysis of paraffin-embedded human kidney tissue using A performed on the Leica® BOND RXm. Tissue was fixed with formaldehyde at room temperature, antigen retrieval was by heat mediation with a EDTA buffer (pH 9. 0). Samples were incubated with primary Antibody (1:500) for 1 hours at room temperature. A undiluted biotinylated CRF Anti-Polyvalent HRP Polymer antibody was used as the secondary antibody.



Western Blotting

Image 2. Anti-SG Antibody (N-term) at 1:1000 dilution + human placenta lysate Lysates/proteins at 20 µg per lane. Secondary Goat Anti-Rabbit IgG, (H+L), Peroxidase conjugated at 1/10000 dilution. Predicted band size : 49 kDa Blocking/Dilution buffer: 5 % NFDm/TBST.



Western Blotting

Image 3. All lanes : Anti-SG Antibody (N-term) at 1:1000 dilution Lane 1: HACAT whole cell lysate Lane 2: A431 whole cell lysate Lysates/proteins at 20 µg per lane. Secondary Goat Anti-Rabbit IgG, (H+L), Peroxidase conjugated at 1/10000 dilution. Predicted band size : 49 kDa Blocking/Dilution buffer: 5 % NFDm/TBST.

Please check the [product details page](#) for more images. Overall 6 images are available for ABIN657152.