

Datasheet for ABIN657158
anti-GIMAP8 antibody (N-Term)[Go to Product page](#)

1 Image

Overview

Quantity:	400 µL
Target:	GIMAP8
Binding Specificity:	AA 205-233, N-Term
Reactivity:	Human
Host:	Rabbit
Clonality:	Polyclonal
Conjugate:	This GIMAP8 antibody is un-conjugated
Application:	Western Blotting (WB)

Product Details

Immunogen:	This GIMAP8 antibody is generated from rabbits immunized with a KLH conjugated synthetic peptide between 205-233 amino acids from the N-terminal region of human GIMAP8.
Clone:	RB33078
Isotype:	Ig Fraction
Purification:	This antibody is purified through a protein A column, followed by peptide affinity purification.

Target Details

Target:	GIMAP8
Alternative Name:	GIMAP8 (GIMAP8 Products)
Background:	This gene encodes a protein belonging to the GTP-binding superfamily and to the immuno-

Target Details

associated nucleotide (IAN) subfamily of nucleotide-binding proteins. In humans, the IAN subfamily genes are located in a cluster at 7q36.1.

Molecular Weight: 74890

NCBI Accession: [NP_783161](#)

UniProt: [Q8ND71](#)

Application Details

Application Notes: WB: 1:1000

Restrictions: For Research Use only

Handling

Format: Liquid

Buffer: Purified polyclonal antibody supplied in PBS with 0.09 % (W/V) sodium azide.

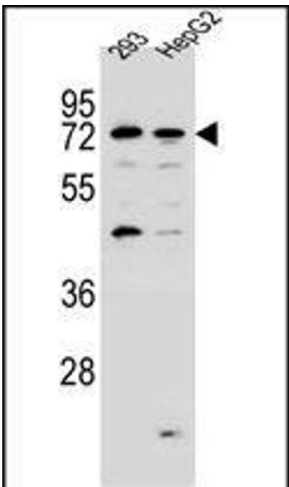
Preservative: Sodium azide

Precaution of Use: This product contains Sodium azide: a POISONOUS AND HAZARDOUS SUBSTANCE which should be handled by trained staff only.

Storage: 4 °C, -20 °C

Expiry Date: 6 months

Images



Western Blotting

Image 1. GIP8 Antibody (N-term) (ABIN657158 and ABIN2846292) western blot analysis in 293, HepG2 cell line lysates (35 µg/lane). This demonstrates the GIP8 antibody detected the GIP8 protein (arrow).