

Datasheet for ABIN657160  
**anti-ASMTL antibody (AA 231-259)**[Go to Product page](#)

## 2 Images

## Overview

|                      |  |
|----------------------|--|
| Quantity:            | 400 µL   |
| Target:              | ASMTL  |
| Binding Specificity: | AA 231-259   |
| Reactivity:          | Human  |
| Host:                | Rabbit   |
| Clonality:           | Polyclonal   |
| Conjugate:           | This ASMTL antibody is un-conjugated   |
| Application:         | Western Blotting (WB), Immunohistochemistry (Paraffin-embedded Sections) (IHC (p)) |

## Product Details

|               |   |
|---------------|---|
| Immunogen:    | This ASMTL antibody is generated from rabbits immunized with a KLH conjugated synthetic peptide between 231-259 amino acids from the Central region of human ASMTL. |
| Clone:        | RB33103   |
| Isotype:      | Ig Fraction   |
| Purification: | This antibody is purified through a protein A column, followed by peptide affinity purification.  |

## Target Details

|                   |  |
|-------------------|--|
| Target:           | ASMTL  |
| Alternative Name: | ASMTL ( <a href="#">ASMTL Products</a> )   |
| Background:       | The protein encoded by this gene has an N-terminus that is similar to the multicopy associated |

## Target Details

filamentation (maf) protein of Bacillus subtilis and to orfE of Escherichia coli, while the C-terminus is similar to N-acetylserotonin O-methyltransferase. This gene is located in the pseudoautosomal region 1 (PAR1) of X and Y chromosomes. Three transcript variants encoding different isoforms have been found for this gene.

Molecular Weight: 68857

NCBI Accession: [NP\\_001166944](#), [NP\\_001166945](#), [NP\\_004183](#)

UniProt: [O95671](#)

## Application Details

Application Notes: WB: 1:1000. IHC-P: 1:10~50

Restrictions: For Research Use only

## Handling

Format: Liquid

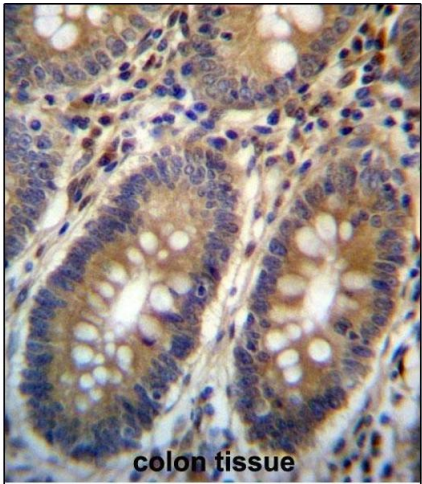
Buffer: Purified polyclonal antibody supplied in PBS with 0.09 % (W/V) sodium azide.

Preservative: Sodium azide

Precaution of Use: This product contains Sodium azide: a POISONOUS AND HAZARDOUS SUBSTANCE which should be handled by trained staff only.

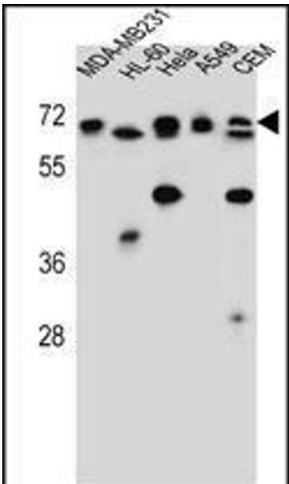
Storage: 4 °C, -20 °C

Expiry Date: 6 months



**Immunohistochemistry (Paraffin-embedded Sections)**

**Image 1.** ASMTL Antibody (Center) (ABIN657160 and ABIN2846294) immunohistochemistry analysis in formalin fixed and paraffin embedded human colon tissue followed by peroxidase conjugation of the secondary antibody and DAB staining. This data demonstrates the use of ASMTL Antibody (Center) for immunohistochemistry. Clinical relevance has not been evaluated.



**Western Blotting**

**Image 2.** ASMTL Antibody (Center) (ABIN657160 and ABIN2846294) western blot analysis in MDA-M,HL-60,HeLa,A549,CEM cell line lysates (35 µg/lane). This demonstrates the ASMTL antibody detected the ASMTL protein (arrow).