



[Go to Product page](#)

Datasheet for ABIN6571601  
**anti-RGS20 antibody**

1 Image

### Overview

Quantity:	200 µL
Target:	RGS20
Reactivity:	Human, Mouse, Rat
Host:	Rabbit
Clonality:	Polyclonal
Conjugate:	This RGS20 antibody is un-conjugated
Application:	Western Blotting (WB)

### Product Details

Immunogen:	Recombinant protein of human RGS20
Isotype:	IgG
Purification:	Affinity purification

### Target Details

Target:	RGS20
Alternative Name:	RGS20 ( <a href="#">RGS20 Products</a> )
Background:	Synonyms: G(z)GAP,Gz selective GTPase activating protein,Gz-GAP,Gz-selective GTPase-activating protein,HGNC:14600,Regulator of G protein signaling 20,Regulator of G-protein signaling 20,Regulator of G-protein signaling Z1,Regulator of Gz selective protein signaling 1,Regulator of Gz-selective protein signaling 1,RGS20,RGS20,RGSZ1,ZGAP1 Background: The protein encoded by this gene belongs to the family of regulator of G protein

## Target Details

---

signaling (RGS) proteins, which are regulatory and structural components of G protein-coupled receptor complexes. RGS proteins inhibit signal transduction by increasing the GTPase activity of G protein alpha subunits, thereby driving them into their inactive GDP-bound forms. This protein selectively binds to G(z)-alpha and G(alpha)-i2 subunits, and regulates their signaling activities. Alternatively spliced transcript variants encoding different isoforms have been found for this gene.

---

Molecular Weight: Observed\_MW: 44kDa  
Calculated\_MW: 17kDa/21kDa/25kDa/27kDa/31kDa/43kDa

---

Gene ID: 8601

---

UniProt: [O76081](#)

---

Pathways: [Myometrial Relaxation and Contraction](#), [Regulation of G-Protein Coupled Receptor Protein Signaling](#)

## Application Details

---

---

Application Notes: WB 1:500 - 1:2000

---

Restrictions: For Research Use only

## Handling

---

---

Concentration: 1 mg/mL

---

Buffer: Buffer: PBS with 0.02 % sodium azide, 50 % glycerol, pH 7.3.

---

Preservative: Sodium azide

---

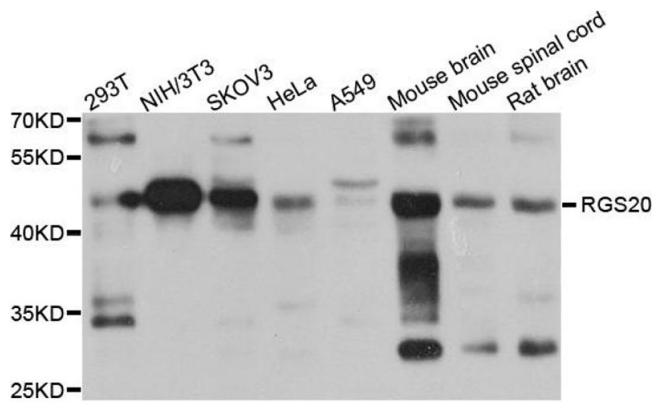
Precaution of Use: This product contains Sodium azide: a POISONOUS AND HAZARDOUS SUBSTANCE which should be handled by trained staff only.

---

Storage: -20 °C

---

Storage Comment: Store at -20°C. Avoid freeze / thaw cycles.



### Western Blotting

**Image 1.** Western blot analysis of extracts of various cell lines, using RGS20 antibody.