

Datasheet for ABIN657162

anti-Leprecan-Like 4 antibody (C-Term)[Go to Product page](#)**1** Image

Overview

Quantity:	400 µL
Target:	Leprecan-Like 4 (LEPREL4)
Binding Specificity:	AA 361-390, C-Term
Reactivity:	Human
Host:	Rabbit
Clonality:	Polyclonal
Conjugate:	This Leprecan-Like 4 antibody is un-conjugated
Application:	Western Blotting (WB)

Product Details

Immunogen:	This SC65 antibody is generated from rabbits immunized with a KLH conjugated synthetic peptide between 361-390 amino acids from the C-terminal region of human SC65.
Clone:	RB33106
Isotype:	Ig Fraction
Purification:	This antibody is purified through a protein A column, followed by peptide affinity purification.

Target Details

Target:	Leprecan-Like 4 (LEPREL4)
Alternative Name:	SC65 (LEPREL4 Products)
Background:	This nucleolar protein was first characterized because it was an autoantigen in cases on

Target Details

interstitial cystitis. The protein, with a predicted molecular weight of 50 kDa, appears to be localized in the particulate compartment of the interphase nucleolus, with a distribution distinct from that of nucleolar protein B23. During mitosis it is associated with chromosomes.

Molecular Weight:	50381
NCBI Accession:	NP_006446
UniProt:	Q92791

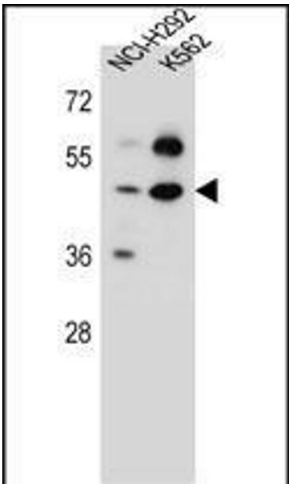
Application Details

Application Notes:	WB: 1:1000
Restrictions:	For Research Use only

Handling

Format:	Liquid
Buffer:	Purified polyclonal antibody supplied in PBS with 0.09 % (W/V) sodium azide.
Preservative:	Sodium azide
Precaution of Use:	This product contains Sodium azide: a POISONOUS AND HAZARDOUS SUBSTANCE which should be handled by trained staff only.
Storage:	4 °C,-20 °C
Expiry Date:	6 months

Images



Western Blotting

Image 1. SC65 Antibody (C-term) (ABIN657162 and ABIN2846296) western blot analysis in NCI-K562 cell line lysates (35 µg/lane). This demonstrates the SC65 antibody detected the SC65 protein (arrow).