



[Go to Product page](#)

Datasheet for ABIN6571645
anti-JHDM1D antibody

1 Image

Overview

Quantity:	200 µL
Target:	JHDM1D
Reactivity:	Human, Mouse, Rat
Host:	Rabbit
Clonality:	Polyclonal
Conjugate:	This JHDM1D antibody is un-conjugated
Application:	Western Blotting (WB)

Product Details

Immunogen:	Recombinant protein of mouse KDM7A
Isotype:	IgG
Purification:	Affinity purification

Target Details

Target:	JHDM1D
Alternative Name:	KDM7A (JHDM1D Products)
Background:	Synonyms: Lysine-specific demethylase 7A,Kdm7a,JmjC domain-containing histone demethylation protein 1D,Lysine-specific demethylase 7,Jhdm1d, Kdm7, Kiaa1718
Molecular Weight:	Observed_MW: 107kDa Calculated_MW: 92kDa/106kDa

Target Details

Gene ID: 338523

UniProt: [Q3UWM4](#)

Application Details

Application Notes: WB 1:500 - 1:2000

Restrictions: For Research Use only

Handling

Concentration: 1 mg/mL

Buffer: Buffer: PBS with 0.02 % sodium azide, 50 % glycerol, pH 7.3.

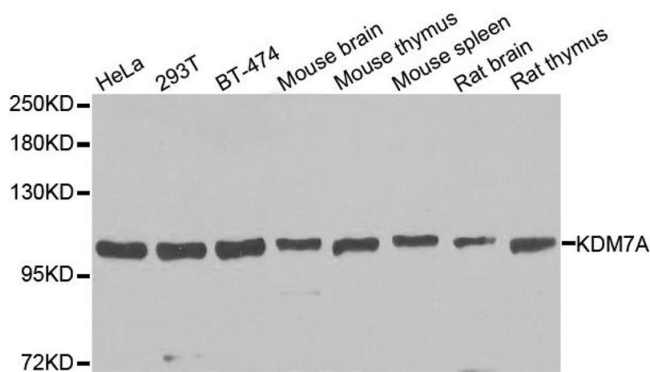
Preservative: Sodium azide

Precaution of Use: This product contains Sodium azide: a POISONOUS AND HAZARDOUS SUBSTANCE which should be handled by trained staff only.

Storage: -20 °C

Storage Comment: Store at -20°C. Avoid freeze / thaw cycles.

Images



Western Blotting

Image 1. Western blot analysis of extracts of various cell lines, using KDM7A antibody.