

Datasheet for ABIN657165
anti-DACH2 antibody (N-Term)[Go to Product page](#)

1 Image

Overview

Quantity:	400 µL
Target:	DACH2
Binding Specificity:	AA 145-173, N-Term
Reactivity:	Human
Host:	Rabbit
Clonality:	Polyclonal
Conjugate:	This DACH2 antibody is un-conjugated
Application:	Western Blotting (WB)

Product Details

Immunogen:	This DACH2 antibody is generated from rabbits immunized with a KLH conjugated synthetic peptide between 145-173 amino acids from the N-terminal region of human DACH2.
Clone:	RB33109
Isotype:	Ig Fraction
Predicted Reactivity:	M
Purification:	This antibody is purified through a protein A column, followed by peptide affinity purification.

Target Details

Target:	DACH2
Alternative Name:	DACH2 (DACH2 Products)

Target Details

Background: This gene is one of two genes which encode a protein similar to the Drosophila protein dachshund, a transcription factor involved in cell fate determination in the eye, limb and genital disc of the fly. The encoded protein contains two characteristic dachshund domains: an N-terminal domain responsible for DNA binding and a C-terminal domain responsible for protein-protein interactions. This gene is located on the X chromosome and is subject to inactivation by DNA methylation. The encoded protein may be involved in regulation of organogenesis and myogenesis, and may play a role in premature ovarian failure. Multiple transcript variants encoding different isoforms have been found for this gene.

Molecular Weight: 65323

NCBI Accession: [NP_001132986](#), [NP_001132987](#), [NP_444511](#)

UniProt: [Q96NX9](#)

Application Details

Application Notes: WB: 1:1000

Restrictions: For Research Use only

Handling

Format: Liquid

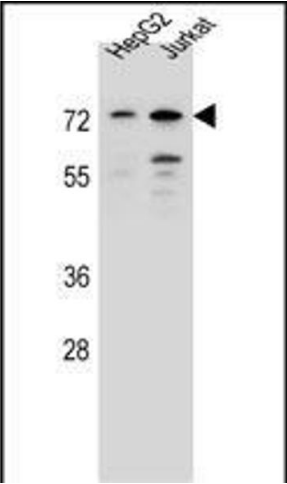
Buffer: Purified polyclonal antibody supplied in PBS with 0.09 % (W/V) sodium azide.

Preservative: Sodium azide

Precaution of Use: This product contains Sodium azide: a POISONOUS AND HAZARDOUS SUBSTANCE which should be handled by trained staff only.

Storage: 4 °C, -20 °C

Expiry Date: 6 months



Western Blotting

Image 1. DACH2 Antibody (N-term) (ABIN657165 and ABIN2846299) western blot analysis in HepG2, Jurkat cell line lysates (35 µg/lane). This demonstrates the DACH2 antibody detected the DACH2 protein (arrow).