



[Go to Product page](#)

Datasheet for ABIN6571669

## anti-CEP44 antibody

### 1 Image

#### Overview

Quantity:	200 µL
Target:	CEP44
Reactivity:	Human, Mouse, Rat
Host:	Rabbit
Clonality:	Polyclonal
Application:	Western Blotting (WB)

#### Product Details

Immunogen:	Recombinant protein of human CEP44
Isotype:	IgG
Purification:	Affinity purification

#### Target Details

Target:	CEP44
Alternative Name:	CEP44 ( <a href="#">CEP44 Products</a> )
Background:	Synonyms: Centrosomal protein of 44 kDa,Cep44,CEP44,HBV PreS1-transactivated protein 3,PS1TP3
Molecular Weight:	Observed_MW: 45kDa Calculated_MW: 44kDa
Gene ID:	80817

## Target Details

UniProt: [Q9C0F1](#)

## Application Details

Application Notes: WB 1:500 - 1:2000

Restrictions: For Research Use only

## Handling

Concentration: 1 mg/mL

Buffer: Buffer: PBS with 0.02 % sodium azide, 50 % glycerol, pH 7.3.

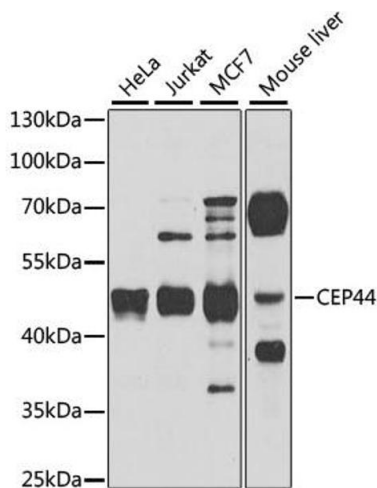
Preservative: Sodium azide

Precaution of Use: This product contains Sodium azide: a POISONOUS AND HAZARDOUS SUBSTANCE which should be handled by trained staff only.

Storage: -20 °C

Storage Comment: Store at -20°C. Avoid freeze / thaw cycles.

## Images



### Western Blotting

**Image 1.** Western blot analysis of extracts of various cell lines, using CEP44 antibody.