

Datasheet for ABIN657168
anti-CDH22 antibody (AA 411-440)

2 Images

[Go to Product page](#)

Overview

Quantity:	400 µL
Target:	CDH22
Binding Specificity:	AA 411-440
Reactivity:	Human
Host:	Rabbit
Clonality:	Polyclonal
Application:	Western Blotting (WB), Immunohistochemistry (Paraffin-embedded Sections) (IHC (p))

Product Details

Immunogen:	This CDH22 antibody is generated from rabbits immunized with a KLH conjugated synthetic peptide between 411-440 amino acids from the Central region of human CDH22.
Clone:	RB33115
Isotype:	Ig Fraction
Purification:	This antibody is purified through a protein A column, followed by peptide affinity purification.

Target Details

Target:	CDH22
Alternative Name:	CDH22 (CDH22 Products)
Background:	This gene is a member of the cadherin superfamily. The gene product is composed of five cadherin repeat domains and a cytoplasmic tail similar to the highly conserved cytoplasmic region of classical cadherins. Expressed predominantly in the brain, this putative calcium-

Target Details

dependent cell adhesion protein may play an important role in morphogenesis and tissue formation in neural and non-neural cells during development and maintenance of the brain and neuroendocrine organs.

Molecular Weight: 89091

NCBI Accession: [NP_067071](#)

UniProt: [Q9UJ99](#)

Application Details

Application Notes: WB: 1:1000. IHC-P: 1:10~50

Restrictions: For Research Use only

Handling

Format: Liquid

Buffer: Purified polyclonal antibody supplied in PBS with 0.09 % (W/V) sodium azide.

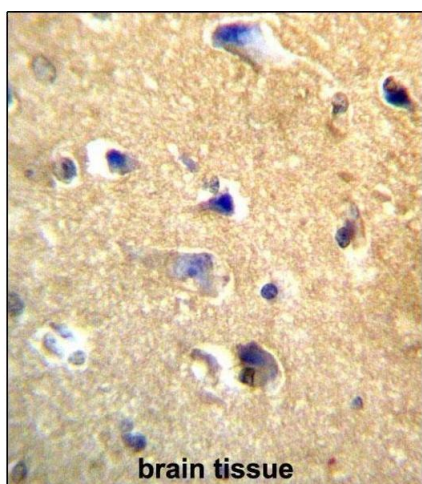
Preservative: Sodium azide

Precaution of Use: This product contains Sodium azide: a POISONOUS AND HAZARDOUS SUBSTANCE which should be handled by trained staff only.

Storage: 4 °C,-20 °C

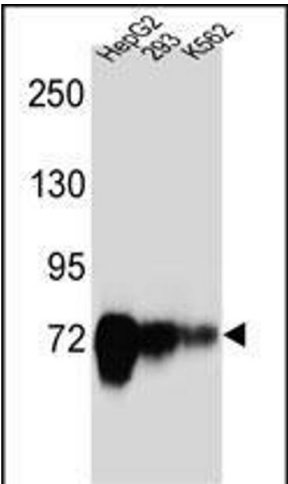
Expiry Date: 6 months

Images



Immunohistochemistry (Paraffin-embedded Sections)

Image 1. CDH22 Antibody (Center) (ABIN657168 and ABIN2846301) immunohistochemistry analysis in formalin fixed and paraffin embedded human brain tissue followed by peroxidase conjugation of the secondary antibody and DAB staining. This data demonstrates the use of CDH22 Antibody (Center) for immunohistochemistry. Clinical relevance has not been evaluated.



Western Blotting

Image 2. CDH22 Antibody (Center) (ABIN657168 and ABIN2846301) western blot analysis in HepG2,293,K562 cell line lysates (35 µg/lane).This demonstrates the CDH22 antibody detected the CDH22 protein (arrow).