

Datasheet for ABIN657169
anti-SEC14L4 antibody (N-Term)

2 Images

[Go to Product page](#)

Overview

Quantity:	400 µL
Target:	SEC14L4
Binding Specificity:	AA 41-70, N-Term
Reactivity:	Human
Host:	Rabbit
Clonality:	Polyclonal
Conjugate:	This SEC14L4 antibody is un-conjugated
Application:	Western Blotting (WB), Immunohistochemistry (Paraffin-embedded Sections) (IHC (p))

Product Details

Immunogen:	This SEC14L4 antibody is generated from rabbits immunized with a KLH conjugated synthetic peptide between 41-70 amino acids from the N-terminal region of human SEC14L4.
Clone:	RB33117
Isotype:	Ig Fraction
Purification:	This antibody is purified through a protein A column, followed by peptide affinity purification.

Target Details

Target:	SEC14L4
Alternative Name:	SEC14L4 (SEC14L4 Products)
Background:	The protein encoded by this gene is highly similar to the protein encoded by the

Target Details

Saccharomyces cerevisiae SEC14 gene. The SEC14 protein is a phosphatidylinositol transfer protein that is essential for biogenesis of Golgi-derived transport vesicles, and thus is required for the export of yeast secretory proteins from the Golgi complex. The specific function of this protein has not yet been determined. Alternative splicing results in multiple transcript variants.

Molecular Weight: 46644

NCBI Accession: [NP_001154840](#), [NP_777637](#)

UniProt: [Q9UDX3](#)

Application Details

Application Notes: WB: 1:1000. IHC-P: 1:10~50

Restrictions: For Research Use only

Handling

Format: Liquid

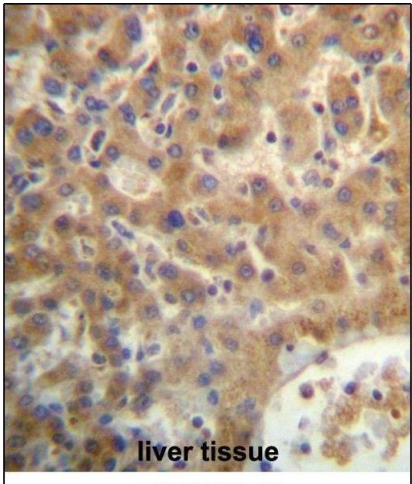
Buffer: Purified polyclonal antibody supplied in PBS with 0.09 % (W/V) sodium azide.

Preservative: Sodium azide

Precaution of Use: This product contains Sodium azide: a POISONOUS AND HAZARDOUS SUBSTANCE which should be handled by trained staff only.

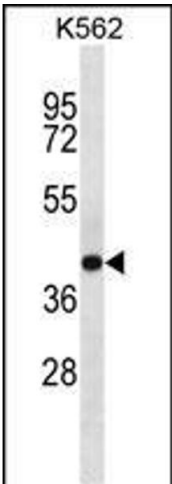
Storage: 4 °C, -20 °C

Expiry Date: 6 months



Immunohistochemistry (Paraffin-embedded Sections)

Image 1. SEC14L4 Antibody (N-term) (ABIN657169 and ABIN2846302) immunohistochemistry analysis in formalin fixed and paraffin embedded human liver tissue followed by peroxidase conjugation of the secondary antibody and DAB staining. This data demonstrates the use of SEC14L4 Antibody (N-term) for immunohistochemistry. Clinical relevance has not been evaluated.



Western Blotting

Image 2. SEC14L4 Antibody (N-term) (ABIN657169 and ABIN2846302) western blot analysis in K562 cell line lysates (35 µg/lane). This demonstrates the SEC14L4 antibody detected the SEC14L4 protein (arrow).