

Datasheet for ABIN657171
anti-ARSF antibody (AA 236-264)



[Go to Product page](#)

3 Images

Overview

Quantity:	400 µL
Target:	ARSF
Binding Specificity:	AA 236-264
Reactivity:	Human
Host:	Rabbit
Clonality:	Polyclonal
Conjugate:	This ARSF antibody is un-conjugated
Application:	Western Blotting (WB), Flow Cytometry (FACS)

Product Details

Immunogen:	This ARSF antibody is generated from rabbits immunized with a KLH conjugated synthetic peptide between 236-264 amino acids from the Central region of human ARSF.
Clone:	RB33119
Isotype:	Ig Fraction
Purification:	This antibody is purified through a protein A column, followed by peptide affinity purification.

Target Details

Target:	ARSF
Alternative Name:	ARSF (ARSF Products)
Background:	This gene is a member of the sulfatase family, and more specifically, the arylsulfatase

Target Details

subfamily. Members of the subfamily share similarity in sequence and splice sites, and are clustered together on chromosome X, suggesting that they are derived from recent gene duplication events. Sulfatases are essential for the correct composition of bone and cartilage matrix. The activity of this protein, unlike that of arylsulfatase E, is not inhibited by warfarin.

Molecular Weight: 65940

NCBI Accession: [NP_001188467](#), [NP_001188468](#), [NP_004033](#)

UniProt: [P54793](#)

Application Details

Application Notes: WB: 1:1000. WB: 1:1000. FC: 1:10~50

Restrictions: For Research Use only

Handling

Format: Liquid

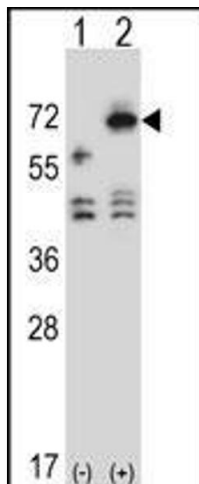
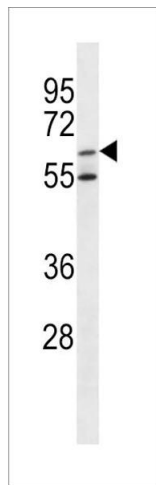
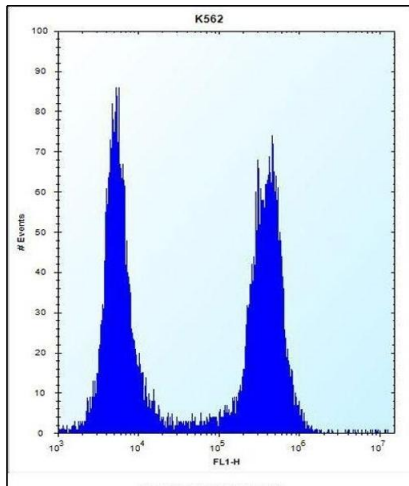
Buffer: Purified polyclonal antibody supplied in PBS with 0.09 % (W/V) sodium azide.

Preservative: Sodium azide

Precaution of Use: This product contains Sodium azide: a POISONOUS AND HAZARDOUS SUBSTANCE which should be handled by trained staff only.

Storage: 4 °C,-20 °C

Expiry Date: 6 months



Flow Cytometry

Image 1. ARSF Antibody (Center) (ABIN657171 and ABIN2846304) flow cytometric analysis of K562 cells (right histogram) compared to a negative control cell (left histogram). FITC-conjugated donkey-anti-rabbit secondary antibodies were used for the analysis.

Western Blotting

Image 2. ARSF Antibody (Center) (ABIN657171 and ABIN2846304) western blot analysis in K562 cell line lysates (35 µg/lane). This demonstrates the ARSF antibody detected the ARSF protein (arrow).

Western Blotting

Image 3. Western blot analysis of ARSF (arrow) using rabbit polyclonal ARSF Antibody (Center) (ABIN657171 and ABIN2846304). 293 cell lysates (2 µg/lane) either nontransfected (Lane 1) or transiently transfected (Lane 2) with the ARSF gene.