

Datasheet for ABIN657172

anti-Tubulin, beta 8 antibody (N-Term)[Go to Product page](#)**1** Image

Overview

Quantity:	400 µL
Target:	Tubulin, beta 8 (TUBB8)
Binding Specificity:	AA 34-62, N-Term
Reactivity:	Human
Host:	Rabbit
Clonality:	Polyclonal
Conjugate:	This Tubulin, beta 8 antibody is un-conjugated
Application:	Western Blotting (WB)

Product Details

Immunogen:	This TUBB8 antibody is generated from rabbits immunized with a KLH conjugated synthetic peptide between 34-62 amino acids from the N-terminal region of human TUBB8.
Clone:	RB33120
Isotype:	Ig Fraction
Purification:	This antibody is purified through a protein A column, followed by peptide affinity purification.

Target Details

Target:	Tubulin, beta 8 (TUBB8)
Alternative Name:	TUBB8 (TUBB8 Products)
Background:	Tubulin is the major constituent of microtubules. It binds two moles of GTP, one at an

Target Details

	exchangeable site on the beta chain and one at a non-exchangeable site on the alpha-chain (By similarity).
Molecular Weight:	49776
NCBI Accession:	NP_817124
UniProt:	Q3ZCM7

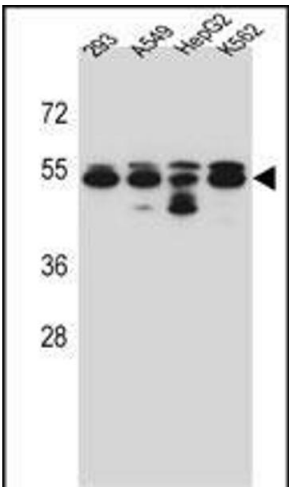
Application Details

Application Notes:	WB: 1:1000
Restrictions:	For Research Use only

Handling

Format:	Liquid
Buffer:	Purified polyclonal antibody supplied in PBS with 0.09 % (W/V) sodium azide.
Preservative:	Sodium azide
Precaution of Use:	This product contains Sodium azide: a POISONOUS AND HAZARDOUS SUBSTANCE which should be handled by trained staff only.
Storage:	4 °C,-20 °C
Expiry Date:	6 months

Images



Western Blotting

Image 1. TUBB8 Antibody (N-term) (ABIN657172 and ABIN2837904) western blot analysis in 293,A549,HepG2,K562 cell line lysates (35 µg/lane). This demonstrates the TUBB8 antibody detected the TUBB8 protein (arrow).