



[Go to Product page](#)

Datasheet for ABIN657175  
**anti-TEX261 antibody (C-Term)**

3 Images

Overview

Quantity:	400 µL
Target:	TEX261
Binding Specificity:	AA 148-176, C-Term
Reactivity:	Human
Host:	Rabbit
Clonality:	Polyclonal
Application:	Western Blotting (WB), Flow Cytometry (FACS), Immunohistochemistry (Paraffin-embedded Sections) (IHC (p))

Product Details

Immunogen:	This TEX261 antibody is generated from rabbits immunized with a KLH conjugated synthetic peptide between 148-176 amino acids from the C-terminal region of human TEX261.
Clone:	RB33130
Isotype:	Ig Fraction
Predicted Reactivity:	B, M, Rat
Purification:	This antibody is purified through a protein A column, followed by peptide affinity purification.

Target Details

Target:	TEX261
Alternative Name:	TEX261 ( <a href="#">TEX261 Products</a> )

## Target Details

Background: The specific function of this protein remains unknown.

Molecular Weight: 22538

NCBI Accession: [NP\\_653183](#)

UniProt: [Q6UWH6](#)

## Application Details

Application Notes: WB: 1:1000. IHC-P: 1:10~50. FC: 1:10~50

Restrictions: For Research Use only

## Handling

Format: Liquid

Buffer: Purified polyclonal antibody supplied in PBS with 0.09 % (W/V) sodium azide.

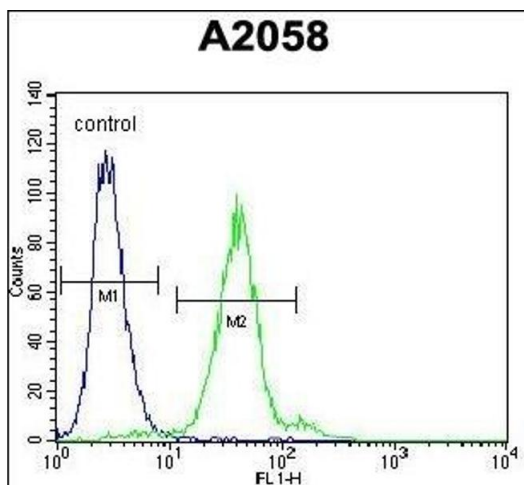
Preservative: Sodium azide

Precaution of Use: This product contains Sodium azide: a POISONOUS AND HAZARDOUS SUBSTANCE which should be handled by trained staff only.

Storage: 4 °C, -20 °C

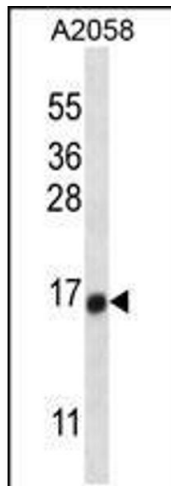
Expiry Date: 6 months

## Images



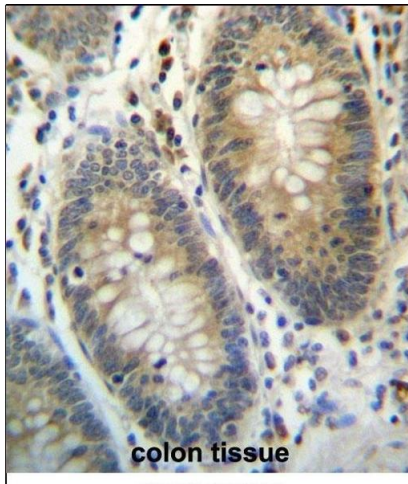
### Flow Cytometry

**Image 1.** TE Antibody (C-term) (ABIN657175 and ABIN2846306) flow cytometric analysis of cells (right histogram) compared to a negative control cell (left histogram). FITC-conjugated goat-anti-rabbit secondary antibodies were used for the analysis.



### Western Blotting

**Image 2.** TE Antibody (C-term) (ABIN657175 and ABIN2846306) western blot analysis in cell line lysates (35  $\mu$ g/lane). This demonstrates the TE antibody detected the TE protein (arrow).



### Immunohistochemistry (Paraffin-embedded Sections)

**Image 3.** TE Antibody (C-term) (ABIN657175 and ABIN2846306) immunohistochemistry analysis in formalin fixed and paraffin embedded human colon tissue followed by peroxidase conjugation of the secondary antibody and DAB staining. This data demonstrates the use of TE Antibody (C-term) for immunohistochemistry. Clinical relevance has not been evaluated.