

Datasheet for ABIN6571769  
**anti-SLC01A2 antibody**[Go to Product page](#)

## 1 Image

## Overview

Quantity:	200 µL
Target:	SLC01A2
Reactivity:	Human, Rat, Mouse
Host:	Rabbit
Clonality:	Polyclonal
Conjugate:	This SLC01A2 antibody is un-conjugated
Application:	Western Blotting (WB)

## Product Details

Immunogen:	Recombinant protein of human SLC01A2
Isotype:	IgG
Purification:	Affinity purification

## Target Details

Target:	SLC01A2
Alternative Name:	SLC01A2 ( <a href="#">SLC01A2 Products</a> )
Background:	<p>Synonyms: OATP,OATP-1,OATP-A,OATP1A2,Organic anion-transporting polypeptide 1,SLC21A3,SLC01A2,S01A2,Sodium-independent organic anion transporter,Solute carrier family 21 member 3,Solute carrier organic anion transporter family member 1A2</p> <p>Background: This gene encodes a sodium-independent transporter which mediates cellular uptake of organic ions in the liver. Its substrates include bile acids, bromosulphophthalein, and</p>

## Target Details

some steroidal compounds. The protein is a member of the SLC21A family of solute carriers.  
Alternative splicing of this gene results in multiple transcript variants.

Molecular Weight: Observed\_MW: 60kDa  
Calculated\_MW: 64kDa/74kDa

Gene ID: 6579

UniProt: [P46721](#)

## Application Details

Application Notes: WB 1:500 - 1:2000

Restrictions: For Research Use only

## Handling

Concentration: 1 mg/mL

Buffer: Buffer: PBS with 0.02 % sodium azide, 50 % glycerol, pH 7.3.

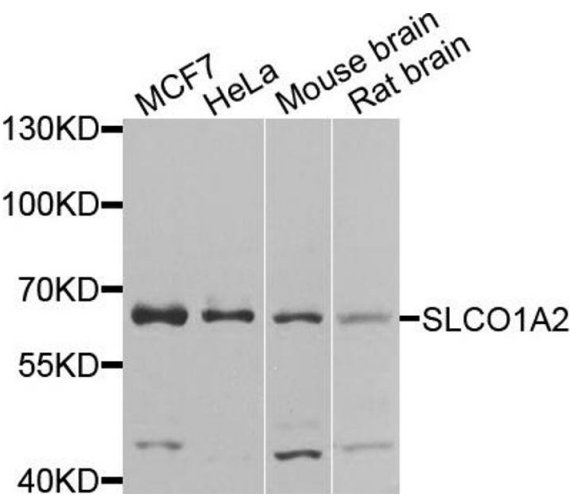
Preservative: Sodium azide

Precaution of Use: This product contains Sodium azide: a POISONOUS AND HAZARDOUS SUBSTANCE which should be handled by trained staff only.

Storage: -20 °C

Storage Comment: Store at -20°C. Avoid freeze / thaw cycles.

## Images



### Western Blotting

**Image 1.** Western blot analysis of extracts of various cell lines, using SLCO1A2 antibody.