



## Datasheet for ABIN6571794 anti-CCDC41 antibody



[Go to Product page](#)

### 1 Image

#### Overview

Quantity:	200 µL
Target:	CCDC41
Reactivity:	Human, Mouse
Host:	Rabbit
Clonality:	Polyclonal
Conjugate:	This CCDC41 antibody is un-conjugated
Application:	Western Blotting (WB)

#### Product Details

Immunogen:	Recombinant protein of human CEP83
Isotype:	IgG
Purification:	Affinity purification

#### Target Details

Target:	CCDC41
Alternative Name:	CEP83 ( <a href="#">CCDC41 Products</a> )
Background:	Synonyms: CCD41,CCDC41,Coiled-coil domain-containing protein 41,Renal carcinoma antigen NY-REN-58 Background: The protein encoded by this gene is a centriolar protein involved in primary cilium assembly. Defects in this gene have been associated with infantile nephronophthisis and intellectual disability.

## Target Details

Molecular Weight:	Observed_MW: 82kDa Calculated_MW: 67kDa/82kDa
Gene ID:	51134
UniProt:	<a href="#">Q9Y592</a>

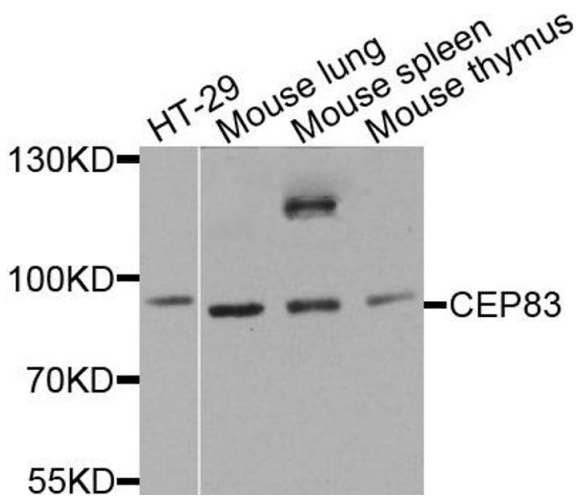
## Application Details

Application Notes:	WB 1:500 - 1:2000
Restrictions:	For Research Use only

## Handling

Concentration:	1 mg/mL
Buffer:	Buffer: PBS with 0.02 % sodium azide, 50 % glycerol, pH 7.3.
Preservative:	Sodium azide
Precaution of Use:	This product contains Sodium azide: a POISONOUS AND HAZARDOUS SUBSTANCE which should be handled by trained staff only.
Storage:	-20 °C
Storage Comment:	Store at -20°C. Avoid freeze / thaw cycles.

## Images



### Western Blotting

**Image 1.** Western blot analysis of extracts of various cell lines, using CEP83 antibody.