

Datasheet for ABIN657186
anti-OR6K6 antibody (C-Term)[Go to Product page](#)

1 Image

Overview

| | |
|----------------------|--------------------------------------|
| Quantity: | 400 µL |
| Target: | OR6K6 |
| Binding Specificity: | AA 310-338, C-Term |
| Reactivity: | Human |
| Host: | Rabbit |
| Clonality: | Polyclonal |
| Conjugate: | This OR6K6 antibody is un-conjugated |
| Application: | Western Blotting (WB) |

Product Details

| | |
|---------------|--|
| Immunogen: | This OR6K6 antibody is generated from rabbits immunized with a KLH conjugated synthetic peptide between 310-338 amino acids from the C-terminal region of human OR6K6. |
| Clone: | RB33171 |
| Isotype: | Ig Fraction |
| Purification: | This antibody is purified through a protein A column, followed by peptide affinity purification. |

Target Details

| | |
|-------------------|--|
| Target: | OR6K6 |
| Alternative Name: | OR6K6 (OR6K6 Products) |
| Background: | Olfactory receptors interact with odorant molecules in the nose, to initiate a neuronal response |

Target Details

that triggers the perception of a smell. The olfactory receptor proteins are members of a large family of G-protein-coupled receptors (GPCR) arising from single coding-exon genes. Olfactory receptors share a 7-transmembrane domain structure with many neurotransmitter and hormone receptors and are responsible for the recognition and G protein-mediated transduction of odorant signals. The olfactory receptor gene family is the largest in the genome. The nomenclature assigned to the olfactory receptor genes and proteins for this organism is independent of other organisms.

| | |
|-------------------|-------|
| Molecular Weight: | 38362 |
|-------------------|-------|

| | |
|-----------------|------------------------------|
| NCBI Accession: | NP_001005184 |
|-----------------|------------------------------|

| | |
|----------|------------------------|
| UniProt: | Q8NGW6 |
|----------|------------------------|

Application Details

| | |
|--------------------|------------|
| Application Notes: | WB: 1:1000 |
|--------------------|------------|

| | |
|---------------|-----------------------|
| Restrictions: | For Research Use only |
|---------------|-----------------------|

Handling

| | |
|---------|--------|
| Format: | Liquid |
|---------|--------|

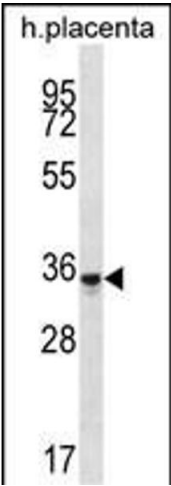
| | |
|---------|--|
| Buffer: | Purified polyclonal antibody supplied in PBS with 0.09 % (W/V) sodium azide. |
|---------|--|

| | |
|---------------|--------------|
| Preservative: | Sodium azide |
|---------------|--------------|

| | |
|--------------------|--|
| Precaution of Use: | This product contains Sodium azide: a POISONOUS AND HAZARDOUS SUBSTANCE which should be handled by trained staff only. |
|--------------------|--|

| | |
|----------|-------------|
| Storage: | 4 °C,-20 °C |
|----------|-------------|

| | |
|--------------|----------|
| Expiry Date: | 6 months |
|--------------|----------|



Western Blotting

Image 1. OR6K6 Antibody (C-term) (ABIN657186 and ABIN2846311) western blot analysis in human placenta tissue lysates (35 µg/lane). This demonstrates the OR6K6 antibody detected the OR6K6 protein (arrow).