

Datasheet for ABIN657189
anti-OR4X2 antibody (C-Term)[Go to Product page](#)

1 Image

Overview

Quantity:	400 µL
Target:	OR4X2
Binding Specificity:	AA 276-303, C-Term
Reactivity:	Human
Host:	Rabbit
Clonality:	Polyclonal
Application:	Western Blotting (WB)

Product Details

Immunogen:	This OR4X2 antibody is generated from rabbits immunized with a KLH conjugated synthetic peptide between 276-303 amino acids from the C-terminal region of human OR4X2.
Clone:	RB33177
Isotype:	Ig Fraction
Purification:	This antibody is purified through a protein A column, followed by peptide affinity purification.

Target Details

Target:	OR4X2
Alternative Name:	OR4X2 (OR4X2 Products)
Background:	Olfactory receptors interact with odorant molecules in the nose, to initiate a neuronal response that triggers the perception of a smell. The olfactory receptor proteins are members of a large family of G-protein-coupled receptors (GPCR) arising from single coding-exon genes. Olfactory

Target Details

receptors share a 7-transmembrane domain structure with many neurotransmitter and hormone receptors and are responsible for the recognition and G protein-mediated transduction of odorant signals. The olfactory receptor gene family is the largest in the genome. The nomenclature assigned to the olfactory receptor genes and proteins for this organism is independent of other organisms.

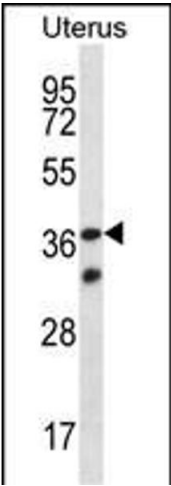
Molecular Weight:	34289
NCBI Accession:	NP_001004727
UniProt:	Q8NGF9

Application Details

Application Notes:	WB: 1:1000
Restrictions:	For Research Use only

Handling

Format:	Liquid
Buffer:	Purified polyclonal antibody supplied in PBS with 0.09 % (W/V) sodium azide.
Preservative:	Sodium azide
Precaution of Use:	This product contains Sodium azide: a POISONOUS AND HAZARDOUS SUBSTANCE which should be handled by trained staff only.
Storage:	4 °C,-20 °C
Expiry Date:	6 months



Western Blotting

Image 1. OR4X2 Antibody (C-term) (ABIN657189 and ABIN2846313) western blot analysis in human normal Uterus tissue lysates (35 µg/lane). This demonstrates the OR4X2 antibody detected the OR4X2 protein (arrow).