

Datasheet for ABIN6572120

anti-PABPC5 antibody[Go to Product page](#)**1** Image

Overview

Quantity:	200 µL
Target:	PABPC5
Reactivity:	Human, Mouse
Host:	Rabbit
Clonality:	Polyclonal
Conjugate:	This PABPC5 antibody is un-conjugated
Application:	Western Blotting (WB)

Product Details

Immunogen:	Recombinant protein of human PABPC5
Isotype:	IgG
Purification:	Affinity purification

Target Details

Target:	PABPC5
Alternative Name:	PABPC5 (PABPC5 Products)
Background:	<p>Synonyms: PABP5, Poly(A) binding protein 5, Poly(A) binding protein cytoplasmic 5, Polyadenylate binding protein 5</p> <p>Background: This gene encodes a protein that binds to the polyA tail found at the 3' end of most eukaryotic mRNAs. It is thought to play a role in the regulation of mRNA metabolic processes in the cytoplasm. This gene is located in a gene-poor region within the X-specific 13d-sY43</p>

Target Details

subinterval of the chromosome Xq21.3/Yp11.2 homology block. It is located close to translocation breakpoints associated with premature ovarian failure, and is therefore a potential candidate gene for this disorder.

Molecular Weight: Observed_MW: 43kDa
Calculated_MW: 39kDa/43kDa

Gene ID: 140886

UniProt: [Q96DU9](#)

Application Details

Application Notes: WB 1:1000 - 1:4000

Restrictions: For Research Use only

Handling

Concentration: 1 mg/mL

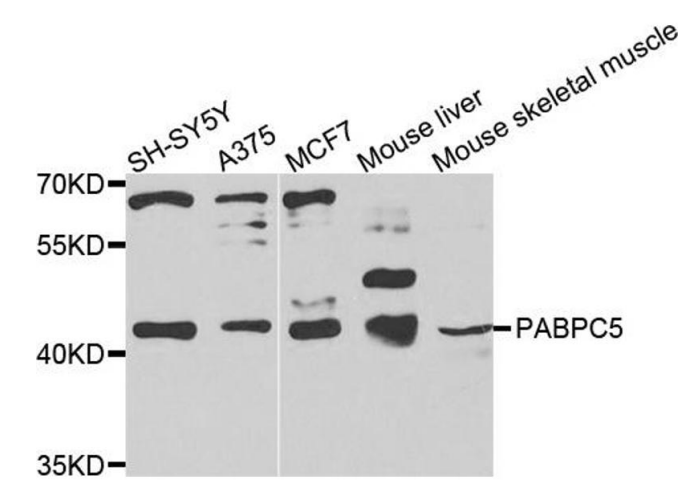
Buffer: Buffer: PBS with 0.02 % sodium azide, 50 % glycerol, pH 7.3.

Preservative: Sodium azide

Precaution of Use: This product contains Sodium azide: a POISONOUS AND HAZARDOUS SUBSTANCE which should be handled by trained staff only.

Storage: -20 °C

Storage Comment: Store at -20°C. Avoid freeze / thaw cycles.



Western Blotting

Image 1. Western blot analysis of extracts of various cell lines, using PABPC5 antibody.