



[Go to Product page](#)

Datasheet for ABIN657221  
**anti-CXCR6 antibody (N-Term)**

1 Image

### Overview

Quantity:	400 µL
Target:	CXCR6
Binding Specificity:	AA 3-31, N-Term
Reactivity:	Human
Host:	Rabbit
Clonality:	Polyclonal
Conjugate:	This CXCR6 antibody is un-conjugated
Application:	Western Blotting (WB)

### Product Details

Immunogen:	This CXCR6 antibody is generated from rabbits immunized with a KLH conjugated synthetic peptide between 3-31 amino acids from the N-terminal region of human CXCR6.
Clone:	RB33271
Isotype:	Ig Fraction
Purification:	This antibody is purified through a protein A column, followed by peptide affinity purification.

### Target Details

Target:	CXCR6
Alternative Name:	CXCR6 ( <a href="#">CXCR6 Products</a> )
Background:	Receptor for the C-X-C chemokine CXCL16. Used as a coreceptor by SIVs and by strains of HIV-

## Target Details

2 and m-tropic HIV-1.

Molecular Weight: 39280

NCBI Accession: [NP\\_006555](#)

UniProt: [O00574](#)

## Application Details

Application Notes: WB: 1:1000

Restrictions: For Research Use only

## Handling

Format: Liquid

Buffer: Purified polyclonal antibody supplied in PBS with 0.09 % (W/V) sodium azide.

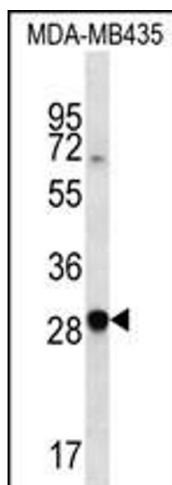
Preservative: Sodium azide

Precaution of Use: This product contains Sodium azide: a POISONOUS AND HAZARDOUS SUBSTANCE which should be handled by trained staff only.

Storage: 4 °C, -20 °C

Expiry Date: 6 months

## Images



### Western Blotting

**Image 1.** CXCR6 Antibody (N-term) (ABIN657221 and ABIN2846326) western blot analysis in MDA-M cell line lysates (35 µg/lane). This demonstrates the CXCR6 antibody detected the CXCR6 protein (arrow).