

Datasheet for ABIN657226  
**anti-CHMP2B antibody (N-Term)**[Go to Product page](#)

## 2 Images

## Overview

Quantity:	400 µL
Target:	CHMP2B
Binding Specificity:	AA 1-30, N-Term
Reactivity:	Human
Host:	Rabbit
Clonality:	Polyclonal
Conjugate:	This CHMP2B antibody is un-conjugated
Application:	Western Blotting (WB), Immunohistochemistry (Paraffin-embedded Sections) (IHC (p))

## Product Details

Immunogen:	This CHMP2B antibody is generated from rabbits immunized with a KLH conjugated synthetic peptide between 1-30 amino acids from the N-terminal region of human CHMP2B.
Clone:	RB33284
Isotype:	Ig Fraction
Predicted Reactivity:	B, M
Purification:	This antibody is purified through a protein A column, followed by peptide affinity purification.

## Target Details

Target:	CHMP2B
Alternative Name:	CHMP2B ( <a href="#">CHMP2B Products</a> )

## Target Details

**Background:** This gene encodes a component of the heteromeric ESCRT-III complex (Endosomal Sorting Complex Required for Transport III) that functions in the recycling or degradation of cell surface receptors. ESCRT-III functions in the concentration and invagination of ubiquitinated endosomal cargos into intraluminal vesicles. The protein encoded by this gene is found as a monomer in the cytosol or as an oligomer in ESCRT-III complexes on endosomal membranes. It is expressed in neurons of all major regions of the brain. Mutations in this gene result in one form of familial frontotemporal lobar degeneration.

**Molecular Weight:** 23907

**NCBI Accession:** [NP\\_001231573](#), [NP\\_054762](#)

**UniProt:** [Q9UQN3](#)

## Application Details

**Application Notes:** WB: 1:1000. IHC-P: 1:10~50

**Restrictions:** For Research Use only

## Handling

**Format:** Liquid

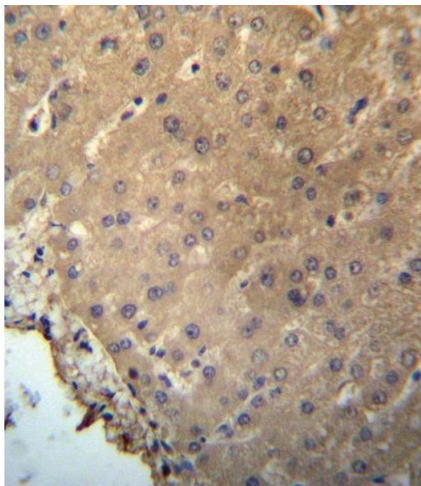
**Buffer:** Purified polyclonal antibody supplied in PBS with 0.09 % (W/V) sodium azide.

**Preservative:** Sodium azide

**Precaution of Use:** This product contains Sodium azide: a POISONOUS AND HAZARDOUS SUBSTANCE which should be handled by trained staff only.

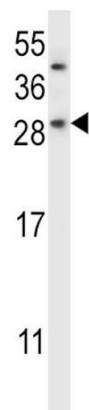
**Storage:** 4 °C,-20 °C

**Expiry Date:** 6 months



**Immunohistochemistry (Paraffin-embedded Sections)**

**Image 1.** CHB Antibody (N-term) (ABIN657226 and ABIN2846328) immunohistochemistry analysis in formalin fixed and paraffin embedded human liver tissue followed by peroxidase conjugation of the secondary antibody and DAB staining. This data demonstrates the use of CHB Antibody (N-term) for immunohistochemistry. Clinical relevance has not been evaluated.



**Western Blotting**

**Image 2.** CHB Antibody (N-term) (ABIN657226 and ABIN2846328) western blot analysis in SK-BR-3 cell line lysates (35 µg/lane). This demonstrates the CHB antibody detected the CHB protein (arrow).