

Datasheet for ABIN657228
anti-ERO1L antibody (C-Term)

2 Images

[Go to Product page](#)

Overview

Quantity:	400 µL
Target:	ERO1L
Binding Specificity:	AA 350-379, C-Term
Reactivity:	Human
Host:	Rabbit
Clonality:	Polyclonal
Application:	Western Blotting (WB), Immunohistochemistry (Paraffin-embedded Sections) (IHC (p))

Product Details

Immunogen:	This ERO1L antibody is generated from rabbits immunized with a KLH conjugated synthetic peptide between 350-379 amino acids from the C-terminal region of human ERO1L.
Clone:	RB33290
Isotype:	Ig Fraction
Purification:	This antibody is purified through a protein A column, followed by peptide affinity purification.

Target Details

Target:	ERO1L
Alternative Name:	ERO1L (ERO1L Products)
Background:	Essential oxidoreductase that oxidizes proteins in the endoplasmic reticulum to produce disulfide bonds. Acts by oxidizing directly P4HB/PDI isomerase through a direct disulfide exchange. Does not act as a direct oxidant of folding substrate, but relies on P4HB/PDI to

Target Details

transfer oxidizing equivalent. Associates with ERP44 but not with GRP54, demonstrating that it does not oxidize all PDI related proteins and can discriminate between PDI and related proteins. Its reoxidation probably involves electron transfer to molecular oxygen via FAD. Acts independently of glutathione. May be responsible for a significant proportion of reactive oxygen species (ROS) in the cell, thereby being a source of oxidative stress. Required for the folding of immunoglobulin proteins. Responsible for the release of the unfolded cholera toxin from reduced P4HB/PDI in case of infection by V.cholerae, thereby playing a role in retrotranslocation of the toxin.

Molecular Weight: 54393

NCBI Accession: [NP_055399](#)

UniProt: [Q96HE7](#)

Pathways: [Peptide Hormone Metabolism](#), [ER-Nucleus Signaling](#), [Brown Fat Cell Differentiation](#)

Application Details

Application Notes: WB: 1:1000. IHC-P: 1:10~50

Restrictions: For Research Use only

Handling

Format: Liquid

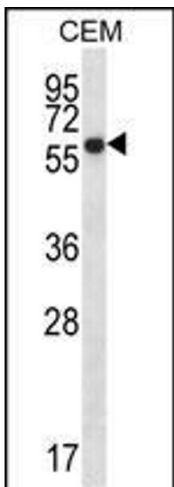
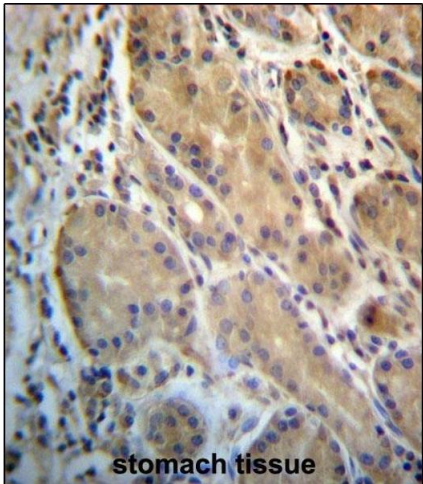
Buffer: Purified polyclonal antibody supplied in PBS with 0.09 % (W/V) sodium azide.

Preservative: Sodium azide

Precaution of Use: This product contains Sodium azide: a POISONOUS AND HAZARDOUS SUBSTANCE which should be handled by trained staff only.

Storage: 4 °C,-20 °C

Expiry Date: 6 months



Immunohistochemistry (Paraffin-embedded Sections)

Image 1. ERO1L Antibody (C-term) (ABIN657228 and ABIN2846330) immunohistochemistry analysis in formalin fixed and paraffin embedded human stomach tissue followed by peroxidase conjugation of the secondary antibody and DAB staining. This data demonstrates the use of ERO1L Antibody (C-term) for immunohistochemistry. Clinical relevance has not been evaluated.

Western Blotting

Image 2. ERO1L Antibody (C-term) (ABIN657228 and ABIN2846330) western blot analysis in CEM cell line lysates (35 µg/lane). This demonstrates the ERO1L antibody detected the ERO1L protein (arrow).