

Datasheet for ABIN657237
anti-WIP12 antibody (N-Term)[2 Images](#)[2 Publications](#)[Go to Product page](#)

Overview

Quantity:	400 µL
Target:	WIP12
Binding Specificity:	AA 4-32, N-Term
Reactivity:	Human
Host:	Rabbit
Clonality:	Polyclonal
Application:	Western Blotting (WB), Immunohistochemistry (Paraffin-embedded Sections) (IHC (p))

Product Details

Immunogen:	This WIP12 antibody is generated from rabbits immunized with a KLH conjugated synthetic peptide between 4-32 amino acids from the N-terminal region of human WIP12.
Clone:	RB33312
Isotype:	Ig Fraction
Purification:	This antibody is purified through a protein A column, followed by peptide affinity purification.

Target Details

Target:	WIP12
Alternative Name:	WIP12 (WIP12 Products)
Background:	WD40 repeat proteins are key components of many essential biologic functions. They regulate the assembly of multiprotein complexes by presenting a beta-propeller platform for simultaneous and reversible protein-protein interactions. Members of the WIP1 subfamily of

Target Details

WD40 repeat proteins, such as WIP12, have a 7-bladed propeller structure and contain a conserved motif for interaction with phospholipids (Proikas-Cezanne et al., 2004 [PubMed 15602573]).

Molecular Weight: 49408

NCBI Accession: [NP_001028690](#), [NP_001028691](#), [NP_001028692](#), [NP_001265228](#), [NP_056425](#), [NP_057087](#)

UniProt: [Q9Y4P8](#)

Application Details

Application Notes: WB: 1:1000. IHC-P: 1:10~50

Restrictions: For Research Use only

Handling

Format: Liquid

Buffer: Purified polyclonal antibody supplied in PBS with 0.09 % (W/V) sodium azide.

Preservative: Sodium azide

Precaution of Use: This product contains Sodium azide: a POISONOUS AND HAZARDOUS SUBSTANCE which should be handled by trained staff only.

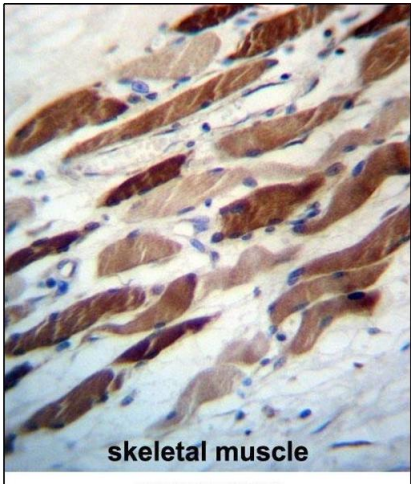
Storage: 4 °C,-20 °C

Expiry Date: 6 months

Publications

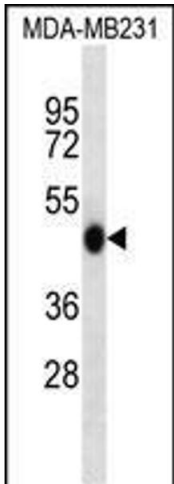
Product cited in: Wu, Ma, Shan, Zhou, Li: "High expression of matrix metalloproteinases 16 is associated with the aggressive malignant behavior and poor survival outcome in colorectal carcinoma." in: **Scientific reports**, Vol. 7, pp. 46531, (2017) ([PubMed](#)).

Shen, Wang, Yu, Zhang, Qin: "MMP16 promotes tumor metastasis and indicates poor prognosis in hepatocellular carcinoma." in: **Oncotarget**, Vol. 8, Issue 42, pp. 72197-72204, (2017) ([PubMed](#)).



Immunohistochemistry (Paraffin-embedded Sections)

Image 1. WIPI2 Antibody (N-term) (ABIN657237 and ABIN2846338) immunohistochemistry analysis in formalin fixed and paraffin embedded human skeletal muscle followed by peroxidase conjugation of the secondary antibody and DAB staining. This data demonstrates the use of WIPI2 Antibody (N-term) for immunohistochemistry. Clinical relevance has not been evaluated.



Western Blotting

Image 2. WIPI2 Antibody (N-term) (ABIN657237 and ABIN2846338) western blot analysis in MDA-M cell line lysates (35 µg/lane). This demonstrates the WIPI2 antibody detected the WIPI2 protein (arrow).