

Datasheet for ABIN657238
anti-MEA1 antibody (N-Term)[Go to Product page](#)

1 Image

Overview

Quantity:	400 µL
Target:	MEA1
Binding Specificity:	AA 19-48, N-Term
Reactivity:	Human
Host:	Rabbit
Clonality:	Polyclonal
Conjugate:	This MEA1 antibody is un-conjugated
Application:	Western Blotting (WB)

Product Details

Immunogen:	This MEA1 antibody is generated from rabbits immunized with a KLH conjugated synthetic peptide between 19-48 amino acids from the N-terminal region of human MEA1.
Clone:	RB33313
Isotype:	Ig Fraction
Purification:	This antibody is purified through a protein A column, followed by peptide affinity purification.

Target Details

Target:	MEA1
Alternative Name:	MEA1 (MEA1 Products)
Background:	MEA1 may play an important role in spermatogenesis and/or testis development.

Target Details

Molecular Weight:	19905
NCBI Accession:	NP_055438
UniProt:	Q16626

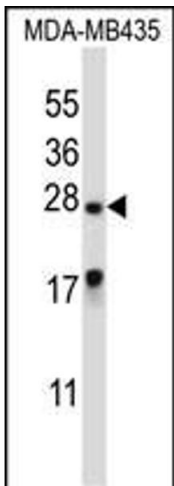
Application Details

Application Notes:	WB: 1:1000
Restrictions:	For Research Use only

Handling

Format:	Liquid
Buffer:	Purified polyclonal antibody supplied in PBS with 0.09 % (W/V) sodium azide.
Preservative:	Sodium azide
Precaution of Use:	This product contains Sodium azide: a POISONOUS AND HAZARDOUS SUBSTANCE which should be handled by trained staff only.
Storage:	4 °C,-20 °C
Expiry Date:	6 months

Images



Western Blotting

Image 1. MEA1 Antibody (N-term) (ABIN657238 and ABIN2837914) western blot analysis in MDA-M cell line lysates (35 µg/lane). This demonstrates the MEA1 antibody detected the MEA1 protein (arrow).