



[Go to Product page](#)

Datasheet for ABIN657240
anti-NLE1 antibody (C-Term)

1 Image

Overview

Quantity:	400 µL
Target:	NLE1
Binding Specificity:	AA 343-372, C-Term
Reactivity:	Human
Host:	Rabbit
Clonality:	Polyclonal
Application:	Western Blotting (WB)

Product Details

Immunogen:	This NLE1 antibody is generated from rabbits immunized with a KLH conjugated synthetic peptide between 343-372 amino acids from the C-terminal region of human NLE1.
Clone:	RB33320
Isotype:	Ig Fraction
Purification:	This antibody is purified through a protein A column, followed by peptide affinity purification.

Target Details

Target:	NLE1
Alternative Name:	NLE1 (NLE1 Products)
Background:	NLE1 (Notchless protein homolog 1) contains 8 WD repeats and may be involved in the Notch signaling pathway.

Target Details

Molecular Weight:	53320
NCBI Accession:	NP_001014445 , NP_060566
UniProt:	Q9NVX2

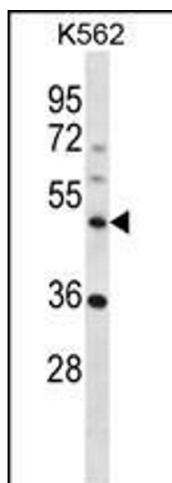
Application Details

Application Notes:	WB: 1:1000
Restrictions:	For Research Use only

Handling

Format:	Liquid
Buffer:	Purified polyclonal antibody supplied in PBS with 0.09 % (W/V) sodium azide.
Preservative:	Sodium azide
Precaution of Use:	This product contains Sodium azide: a POISONOUS AND HAZARDOUS SUBSTANCE which should be handled by trained staff only.
Storage:	4 °C,-20 °C
Expiry Date:	6 months

Images



Western Blotting

Image 1. NLE1 Antibody (C-term) (ABIN657240 and ABIN2846339) western blot analysis in K562 cell line lysates (35 µg/lane). This demonstrates the NLE1 antibody detected the NLE1 protein (arrow).