



[Go to Product page](#)

Datasheet for ABIN657241

anti-KCTD3 antibody (C-Term)

3 Images

Overview

Quantity:	400 µL
Target:	KCTD3
Binding Specificity:	AA 725-754, C-Term
Reactivity:	Human
Host:	Rabbit
Clonality:	Polyclonal
Application:	Western Blotting (WB), Immunohistochemistry (Paraffin-embedded Sections) (IHC (p))

Product Details

Immunogen:	This KCTD3 antibody is generated from rabbits immunized with a KLH conjugated synthetic peptide between 725-754 amino acids from the C-terminal region of human KCTD3.
Clone:	RB33321
Isotype:	Ig Fraction
Purification:	This antibody is purified through a protein A column, followed by peptide affinity purification.

Target Details

Target:	KCTD3
Alternative Name:	KCTD3 (KCTD3 Products)
Background:	KCTD3 belongs to the KCTD3 family. It contains one BTB (POZ) domain and five WD repeats. The exact function of KCTD3 is not known. There are three named isoforms.

Target Details

Molecular Weight: 88984

NCBI Accession: [NP_057205](#)

UniProt: [Q9Y597](#)

Application Details

Application Notes: WB: 1:1000. WB: 1:1000. IHC-P: 1:10~50

Restrictions: For Research Use only

Handling

Format: Liquid

Buffer: Purified polyclonal antibody supplied in PBS with 0.09 % (W/V) sodium azide.

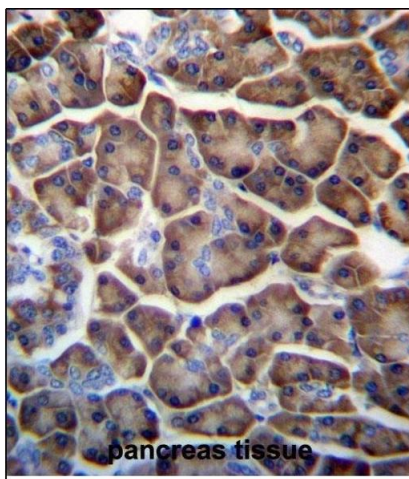
Preservative: Sodium azide

Precaution of Use: This product contains Sodium azide: a POISONOUS AND HAZARDOUS SUBSTANCE which should be handled by trained staff only.

Storage: 4 °C,-20 °C

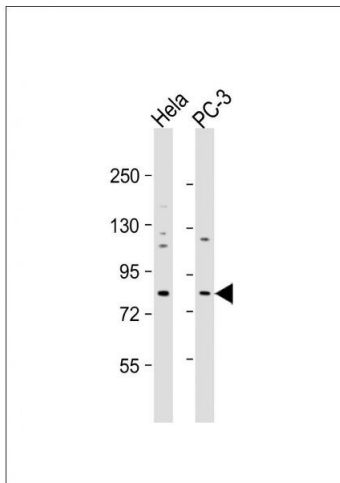
Expiry Date: 6 months

Images



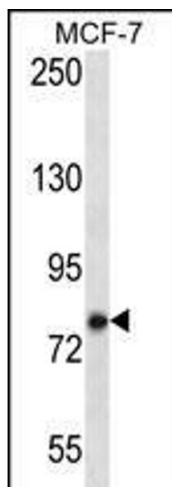
Immunohistochemistry (Paraffin-embedded Sections)

Image 1. KCTD3 Antibody (C-term) (ABIN657241 and ABIN2846340) immunohistochemistry analysis in formalin fixed and paraffin embedded human pancreas tissue followed by peroxidase conjugation of the secondary antibody and DAB staining. This data demonstrates the use of KCTD3 Antibody (C-term) for immunohistochemistry. Clinical relevance has not been evaluated.



Western Blotting

Image 2. All lanes : Anti-KCTD3 Antibody (C-term) at 1:1000 dilution Lane 1: HeLa whole cell lysate Lane 2: PC-3 whole cell lysate Lysates/proteins at 20 µg per lane. Secondary Goat Anti-Rabbit IgG, (H+L), Peroxidase conjugated at 1/10000 dilution. Predicted band size : 89 kDa Blocking/Dilution buffer: 5 % NFDN/TBST.



Western Blotting

Image 3. KCTD3 Antibody (C-term) (ABIN657241 and ABIN2846340) western blot analysis in MCF-7 cell line lysates (35 µg/lane). This demonstrates the KCTD3 antibody detected the KCTD3 protein (arrow).