



[Go to Product page](#)

Datasheet for ABIN657246

anti-MOSPD2 antibody (N-Term)

2 Images

Overview

Quantity:	400 µL
Target:	MOSPD2
Binding Specificity:	AA 11-40, N-Term
Reactivity:	Human
Host:	Rabbit
Clonality:	Polyclonal
Application:	Western Blotting (WB), Immunohistochemistry (Paraffin-embedded Sections) (IHC (p))

Product Details

Immunogen:	This MOSPD2 antibody is generated from rabbits immunized with a KLH conjugated synthetic peptide between 11-40 amino acids from the N-terminal region of human MOSPD2.
Clone:	RB33344
Isotype:	Ig Fraction
Purification:	This antibody is purified through a protein A column, followed by peptide affinity purification.

Target Details

Target:	MOSPD2
Alternative Name:	MOSPD2 (MOSPD2 Products)
Background:	The specific function of this protein remains unknown.
Molecular Weight:	59746

Target Details

NCBI Accession: [NP_001170946, NP_689794](#)

UniProt: [Q8NHP6](#)

Application Details

Application Notes: WB: 1:1000. IHC-P: 1:10~50

Restrictions: For Research Use only

Handling

Format: Liquid

Buffer: Purified polyclonal antibody supplied in PBS with 0.09 % (W/V) sodium azide.

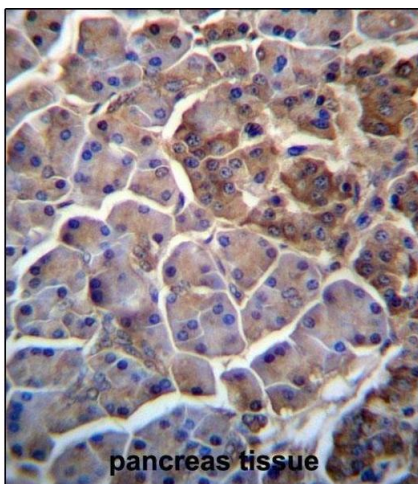
Preservative: Sodium azide

Precaution of Use: This product contains Sodium azide: a POISONOUS AND HAZARDOUS SUBSTANCE which should be handled by trained staff only.

Storage: 4 °C, -20 °C

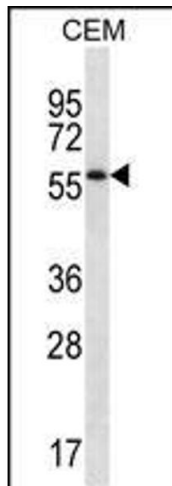
Expiry Date: 6 months

Images



Immunohistochemistry (Paraffin-embedded Sections)

Image 1. MOSPD2 Antibody (N-term) (ABIN657246 and ABIN2846344) immunohistochemistry analysis in formalin fixed and paraffin embedded human pancreas tissue followed by peroxidase conjugation of the secondary antibody and DAB staining. This data demonstrates the use of MOSPD2 Antibody (N-term) for immunohistochemistry. Clinical relevance has not been evaluated.



Western Blotting

Image 2. MOSPD2 Antibody (N-term) (ABIN657246 and ABIN2846344) western blot analysis in CEM cell line lysates (35 µg/lane). This demonstrates the MOSPD2 antibody detected the MOSPD2 protein (arrow).