

Datasheet for ABIN657248
anti-SGEF antibody (AA 378-406)[Go to Product page](#)

2 Images

Overview

Quantity:	400 µL
Target:	SGEF (ARHGEF26)
Binding Specificity:	AA 378-406
Reactivity:	Human
Host:	Rabbit
Clonality:	Polyclonal
Conjugate:	This SGEF antibody is un-conjugated
Application:	Western Blotting (WB), Immunohistochemistry (Paraffin-embedded Sections) (IHC (p))

Product Details

Immunogen:	This SGEF antibody is generated from rabbits immunized with a KLH conjugated synthetic peptide between 378-406 amino acids from the Central region of human SGEF.
Clone:	RB33350
Isotype:	Ig Fraction
Purification:	This antibody is purified through a protein A column, followed by peptide affinity purification.

Target Details

Target:	SGEF (ARHGEF26)
Alternative Name:	SGEF (ARHGEF26 Products)
Background:	SGEF activates RhoG GTPase by promoting the exchange of GDP by GTP. Required for the

Target Details

formation of membrane ruffles during macropinocytosis. Required for the formation of cup-like structures during trans-endothelial migration of leukocytes. In case of *Salmonella enterica* infection, activated by SopB, which induces cytoskeleton rearrangements and promotes bacterial entry.

Molecular Weight: 97346

NCBI Accession: [NP_001238891](#), [NP_001238892](#), [NP_056410](#)

UniProt: [Q96DR7](#)

Application Details

Application Notes: WB: 1:1000. IHC-P: 1:10~50

Restrictions: For Research Use only

Handling

Format: Liquid

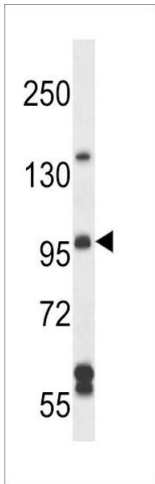
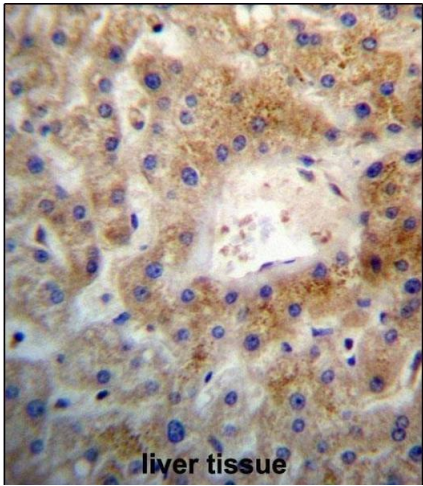
Buffer: Purified polyclonal antibody supplied in PBS with 0.09 % (W/V) sodium azide.

Preservative: Sodium azide

Precaution of Use: This product contains Sodium azide: a POISONOUS AND HAZARDOUS SUBSTANCE which should be handled by trained staff only.

Storage: 4 °C, -20 °C

Expiry Date: 6 months



Immunohistochemistry (Paraffin-embedded Sections)

Image 1. SGEF Antibody (Center) (ABIN657248 and ABIN2846346) immunohistochemistry analysis in formalin fixed and paraffin embedded human liver tissue followed by peroxidase conjugation of the secondary antibody and DAB staining. This data demonstrates the use of SGEF Antibody (Center) for immunohistochemistry. Clinical relevance has not been evaluated.

Western Blotting

Image 2. SGEF Antibody (Center) (ABIN657248 and ABIN2846346) western blot analysis in NCI- cell line lysates (35 µg/lane). This demonstrates the SGEF antibody detected the SGEF protein (arrow).