

Datasheet for ABIN657256

anti-HuC/ELAVL3 antibody (N-Term)[Go to Product page](#)**3** Images

Overview

Quantity:	400 µL
Target:	HuC/ELAVL3 (ELAVL3)
Binding Specificity:	AA 71-99, N-Term
Reactivity:	Human
Host:	Rabbit
Clonality:	Polyclonal
Conjugate:	This HuC/ELAVL3 antibody is un-conjugated
Application:	Western Blotting (WB), Immunohistochemistry (Paraffin-embedded Sections) (IHC (p))

Product Details

Immunogen:	This ELAVL3 antibody is generated from rabbits immunized with a KLH conjugated synthetic peptide between 71-99 amino acids from the N-terminal region of human ELAVL3.
Clone:	RB33427
Isotype:	Ig Fraction
Predicted Reactivity:	M
Purification:	This antibody is purified through a protein A column, followed by peptide affinity purification.

Target Details

Target:	HuC/ELAVL3 (ELAVL3)
Alternative Name:	ELAVL3 (ELAVL3 Products)

Target Details

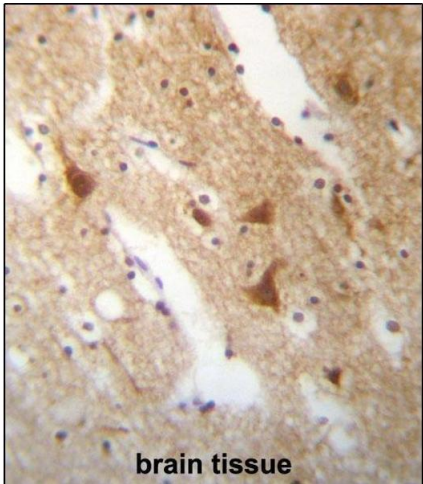
Background:	A member of the ELAVL protein family, ELAV-like 3 is a neural-specific RNA-binding protein which contains three RNP-type RNA recognition motifs. The observation that ELAVL3 is one of several Hu antigens (neuronal-specific RNA-binding proteins) recognized by the anti-Hu serum antibody present in sera from patients with paraneoplastic encephalomyelitis and sensory neuronopathy (PEM/PSN) suggests it has a role in neurogenesis. Two alternatively spliced transcript variants encoding distinct isoforms have been found for this gene.
Molecular Weight:	39547
NCBI Accession:	NP_001411 , NP_115657
UniProt:	Q14576

Application Details

Application Notes:	WB: 1:1000. WB: 1:1000. IHC-P: 1:10~50
Restrictions:	For Research Use only

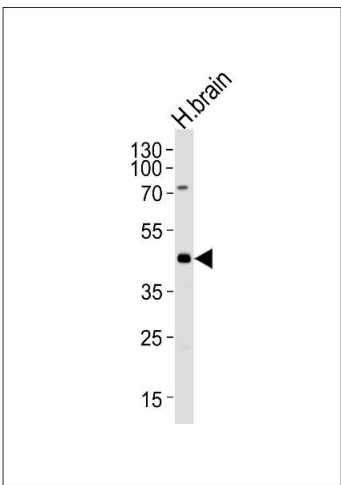
Handling

Format:	Liquid
Buffer:	Purified polyclonal antibody supplied in PBS with 0.09 % (W/V) sodium azide.
Preservative:	Sodium azide
Precaution of Use:	This product contains Sodium azide: a POISONOUS AND HAZARDOUS SUBSTANCE which should be handled by trained staff only.
Storage:	4 °C,-20 °C
Expiry Date:	6 months



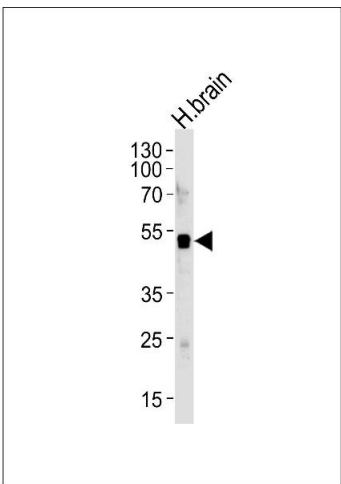
Immunohistochemistry (Paraffin-embedded Sections)

Image 1. ELAVL3 Antibody (N-term) (ABIN657256 and ABIN2846353) immunohistochemistry analysis in formalin fixed and paraffin embedded human brain tissue followed by peroxidase conjugation of the secondary antibody and DAB staining. This data demonstrates the use of ELAVL3 Antibody (N-term) for immunohistochemistry. Clinical relevance has not been evaluated.



Western Blotting

Image 2. Western blot analysis of lysate from human brain tissue lysate, using ELAVL3 Antibody (N-term) (ABIN657256 and ABIN2846353). (ABIN657256 and ABIN2846353) was diluted at 1:1000 at each lane. A goat anti-rabbit IgG H&L(HRP) at 1:5000 dilution was used as the secondary antibody. Lysate at 35 µg per lane.



Western Blotting

Image 3. Western blot analysis of lysate from human brain tissue lysate, using ELAVL3 Antibody (N-term) (ABIN657256 and ABIN2846353). (ABIN657256 and ABIN2846353) was diluted at 1:1000 at each lane. A goat anti-rabbit IgG H&L(HRP) at 1:5000 dilution was used as the secondary antibody. Lysate at 35 µg per lane.