



[Go to Product page](#)

Datasheet for ABIN657260

anti-ARL6IP6 antibody (N-Term)

1 Image

Overview

Quantity:	400 µL
Target:	ARL6IP6
Binding Specificity:	AA 19-47, N-Term
Reactivity:	Human
Host:	Rabbit
Clonality:	Polyclonal
Conjugate:	This ARL6IP6 antibody is un-conjugated
Application:	Western Blotting (WB)

Product Details

Immunogen:	This ARL6IP6 antibody is generated from rabbits immunized with a KLH conjugated synthetic peptide between 19-47 amino acids from the N-terminal region of human ARL6IP6.
Clone:	RB33452
Isotype:	Ig Fraction
Purification:	This antibody is purified through a protein A column, followed by peptide affinity purification.

Target Details

Target:	ARL6IP6
Alternative Name:	ARL6IP6 (ARL6IP6 Products)
Background:	The specific function of this protein remains unknown.

Target Details

Molecular Weight:	24676
NCBI Accession:	NP_689735
UniProt:	Q8N6S5
Pathways:	SARS-CoV-2 Protein Interactome

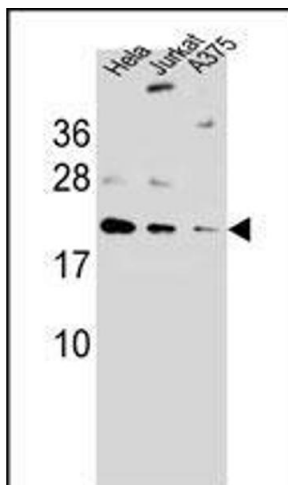
Application Details

Application Notes:	WB: 1:1000
Restrictions:	For Research Use only

Handling

Format:	Liquid
Buffer:	Purified polyclonal antibody supplied in PBS with 0.09 % (W/V) sodium azide.
Preservative:	Sodium azide
Precaution of Use:	This product contains Sodium azide: a POISONOUS AND HAZARDOUS SUBSTANCE which should be handled by trained staff only.
Storage:	4 °C,-20 °C
Expiry Date:	6 months

Images



Western Blotting

Image 1. ARL6IP6Antibody (N-term) (ABIN657260 and ABIN2846355) western blot analysis in ,HeLa,Jurkat cell line lysates (35 µg/lane).This demonstrates the ARL6IP6 antibody detected the ARL6IP6 protein (arrow).