

Datasheet for ABIN657263
anti-DHRS7B antibody (AA 133-161)[Go to Product page](#)

2 Images

Overview

Quantity:	400 µL
Target:	DHRS7B
Binding Specificity:	AA 133-161
Reactivity:	Human
Host:	Rabbit
Clonality:	Polyclonal
Conjugate:	This DHRS7B antibody is un-conjugated
Application:	Western Blotting (WB), Immunohistochemistry (Paraffin-embedded Sections) (IHC (p))

Product Details

Immunogen:	This DHRS7B antibody is generated from rabbits immunized with a KLH conjugated synthetic peptide between 133-161 amino acids from the Central region of human DHRS7B.
Clone:	RB33462
Isotype:	Ig Fraction
Purification:	This antibody is purified through a protein A column, followed by peptide affinity purification.

Target Details

Target:	DHRS7B
Alternative Name:	DHRS7B (DHRS7B Products)
Background:	This gene is located within the Smith-Magenis syndrome region on chromosome 17. It encodes

Target Details

	a protein of unknown function.
Molecular Weight:	35119
NCBI Accession:	NP_056325
UniProt:	Q6IAN0

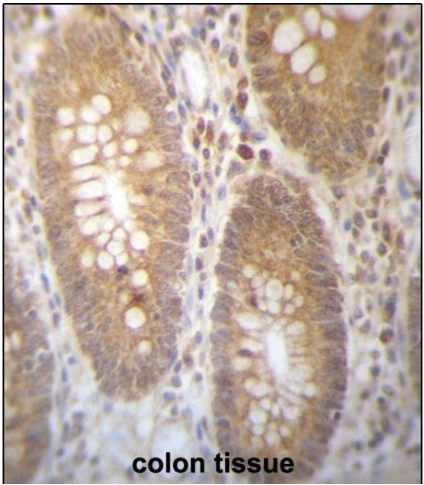
Application Details

Application Notes:	WB: 1:1000. IHC-P: 1:10~50
Restrictions:	For Research Use only

Handling

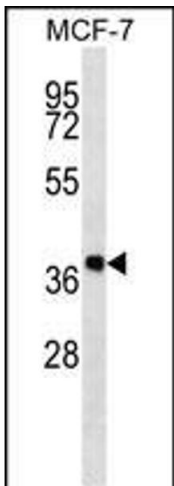
Format:	Liquid
Buffer:	Purified polyclonal antibody supplied in PBS with 0.09 % (W/V) sodium azide.
Preservative:	Sodium azide
Precaution of Use:	This product contains Sodium azide: a POISONOUS AND HAZARDOUS SUBSTANCE which should be handled by trained staff only.
Storage:	4 °C,-20 °C
Expiry Date:	6 months

Images



Immunohistochemistry (Paraffin-embedded Sections)

Image 1. DHR7B Antibody (Center) (ABIN657263 and ABIN2846358) immunohistochemistry analysis in formalin fixed and paraffin embedded human colon tissue followed by peroxidase conjugation of the secondary antibody and DAB staining. This data demonstrates the use of DHR7B Antibody (Center) for immunohistochemistry. Clinical relevance has not been evaluated.



Western Blotting

Image 2. DHR7B Antibody (Center) (ABIN657263 and ABIN2846358) western blot analysis in MCF-7 cell line lysates (35 µg/lane). This demonstrates the DHR7B antibody detected the DHR7B protein (arrow).