

Datasheet for ABIN657270
anti-PDCL3 antibody (N-Term)[Go to Product page](#)

1 Image

Overview

Quantity:	400 µL
Target:	PDCL3
Binding Specificity:	AA 39-68, N-Term
Reactivity:	Human
Host:	Rabbit
Clonality:	Polyclonal
Application:	Western Blotting (WB)

Product Details

Immunogen:	This PDCL3 antibody is generated from rabbits immunized with a KLH conjugated synthetic peptide between 39-68 amino acids from the N-terminal region of human PDCL3.
Clone:	RB33488
Isotype:	Ig Fraction
Purification:	This antibody is purified through a protein A column, followed by peptide affinity purification.

Target Details

Target:	PDCL3
Alternative Name:	PDCL3 (PDCL3 Products)
Background:	This gene encodes a member of the phosducin-like protein family and is a putative modulator of heterotrimeric G proteins. The protein shares extensive amino acid sequence homology with phosducin. Members of the phosducin-like protein family have been shown to bind to the beta-

Target Details

	gamma subunits of G proteins. [provided by RefSeq].
Molecular Weight:	27614
NCBI Accession:	NP_076970
UniProt:	Q9H2J4

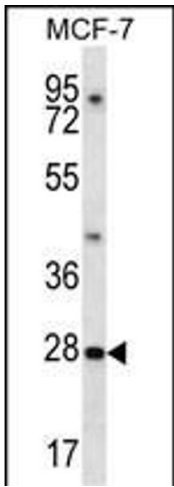
Application Details

Application Notes:	WB: 1:1000
Restrictions:	For Research Use only

Handling

Format:	Liquid
Buffer:	Purified polyclonal antibody supplied in PBS with 0.09 % (W/V) sodium azide.
Preservative:	Sodium azide
Precaution of Use:	This product contains Sodium azide: a POISONOUS AND HAZARDOUS SUBSTANCE which should be handled by trained staff only.
Storage:	4 °C,-20 °C
Expiry Date:	6 months

Images



Western Blotting

Image 1. PDCL3 Antibody (N-term) (ABIN657270 and ABIN2846362) western blot analysis in MCF-7 cell line lysates (35 µg/lane). This demonstrates the PDCL3 antibody detected the PDCL3 protein (arrow).