

Datasheet for ABIN657271

anti-PNPLA1 antibody (N-Term)**1** Image[Go to Product page](#)

Overview

Quantity:	400 µL
Target:	PNPLA1
Binding Specificity:	AA 1-30, N-Term
Reactivity:	Human
Host:	Rabbit
Clonality:	Polyclonal
Conjugate:	This PNPLA1 antibody is un-conjugated
Application:	Western Blotting (WB)

Product Details

Immunogen:	This PNPLA1 antibody is generated from rabbits immunized with a KLH conjugated synthetic peptide between 1-30 amino acids from the N-terminal region of human PNPLA1.
Clone:	RB33525
Isotype:	Ig Fraction
Purification:	This antibody is purified through a protein A column, followed by peptide affinity purification.

Target Details

Target:	PNPLA1
Alternative Name:	PNPLA1 (PNPLA1 Products)
Background:	Human patatin-like phospholipases, such as PNPLA1, have been implicated in regulation of

Target Details

	adipocyte differentiation and have been induced by metabolic stimuli (Wilson et al., 2006 [PubMed 16799181]).
Molecular Weight:	57875
NCBI Accession:	NP_001139188 , NP_001139189 , NP_775947
UniProt:	Q8N8W4

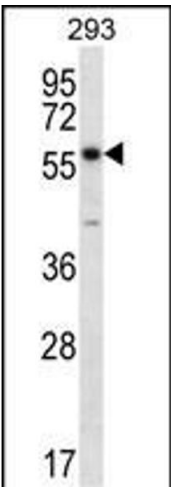
Application Details

Application Notes:	WB: 1:1000
Restrictions:	For Research Use only

Handling

Format:	Liquid
Buffer:	Purified polyclonal antibody supplied in PBS with 0.09 % (W/V) sodium azide.
Preservative:	Sodium azide
Precaution of Use:	This product contains Sodium azide: a POISONOUS AND HAZARDOUS SUBSTANCE which should be handled by trained staff only.
Storage:	4 °C,-20 °C
Expiry Date:	6 months

Images



Western Blotting

Image 1. PNPLA1 Antibody (N-term) (ABIN657271 and ABIN2846363) western blot analysis in 293 cell line lysates (35 µg/lane). This demonstrates the PNPLA1 antibody detected the PNPLA1 protein (arrow).