



[Go to Product page](#)

Datasheet for ABIN657272

## anti-PGAM4 antibody (N-Term)

### 2 Images

#### Overview

Quantity:	400 µL
Target:	PGAM4
Binding Specificity:	AA 25-53, N-Term
Reactivity:	Human
Host:	Rabbit
Clonality:	Polyclonal
Conjugate:	This PGAM4 antibody is un-conjugated
Application:	Western Blotting (WB), Immunohistochemistry (Paraffin-embedded Sections) (IHC (p))

#### Product Details

Immunogen:	This PGAM4 antibody is generated from rabbits immunized with a KLH conjugated synthetic peptide between 25-53 amino acids from the N-terminal region of human PGAM4.
Clone:	RB33526
Isotype:	Ig Fraction
Predicted Reactivity:	B, M, Rat
Purification:	This antibody is purified through a protein A column, followed by peptide affinity purification.

#### Target Details

Target:	PGAM4
Alternative Name:	PGAM4 ( <a href="#">PGAM4 Products</a> )

## Target Details

---

**Background:** This intronless gene appears to have arisen from a retrotransposition event, yet it is thought to be an expressed, protein-coding gene. The encoded protein is a member of the phosphoglycerate mutase family, a set of enzymes that catalyze the transfer of a phosphate group from 3-phosphoglycerate to 2-phosphoglycerate.

**Molecular Weight:** 28777

**NCBI Accession:** [NP\\_001025062](#)

**UniProt:** [Q8N0Y7](#)

## Application Details

---

**Application Notes:** WB: 1:1000. IHC-P: 1:10~50

**Restrictions:** For Research Use only

## Handling

---

**Format:** Liquid

**Buffer:** Purified polyclonal antibody supplied in PBS with 0.09 % (W/V) sodium azide.

**Preservative:** Sodium azide

**Precaution of Use:** This product contains Sodium azide: a POISONOUS AND HAZARDOUS SUBSTANCE which should be handled by trained staff only.

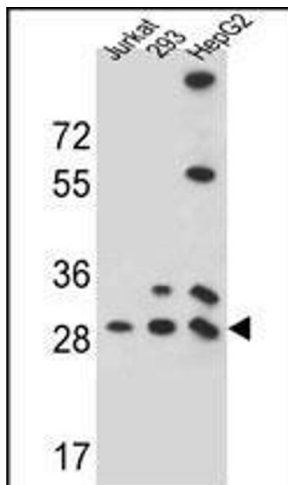
**Storage:** 4 °C,-20 °C

**Expiry Date:** 6 months



### Immunohistochemistry (Paraffin-embedded Sections)

**Image 1.** PG Antibody (N-term) (ABIN657272 and ABIN2846364) immunohistochemistry analysis in formalin fixed and paraffin embedded human colon tissue followed by peroxidase conjugation of the secondary antibody and DAB staining. This data demonstrates the use of PG Antibody (N-term) for immunohistochemistry. Clinical relevance has not been evaluated.



### Western Blotting

**Image 2.** PG Antibody (N-term) (ABIN657272 and ABIN2846364) western blot analysis in 293, HepG2, Jurkat cell line lysates (35 µg/lane). This demonstrates the PG antibody detected the PG protein (arrow).