



[Go to Product page](#)

Datasheet for ABIN657278  
**anti-ZDHHC20 antibody (N-Term)**

2 Images

Overview

Quantity:	400 µL
Target:	ZDHHC20
Binding Specificity:	AA 26-54, N-Term
Reactivity:	Human
Host:	Rabbit
Clonality:	Polyclonal
Application:	Western Blotting (WB), Immunohistochemistry (Paraffin-embedded Sections) (IHC (p))

Product Details

Immunogen:	This ZDHHC20 antibody is generated from rabbits immunized with a KLH conjugated synthetic peptide between 26-54 amino acids from the N-terminal region of human ZDHHC20.
Clone:	RB33548
Isotype:	Ig Fraction
Purification:	This antibody is purified through a protein A column, followed by peptide affinity purification.

Target Details

Target:	ZDHHC20
Alternative Name:	ZDHHC20 ( <a href="#">ZDHHC20 Products</a> )
Background:	The specific function of this protein remains unknown.
Molecular Weight:	42278

## Target Details

NCBI Accession: [NP\\_694983](#)

UniProt: [Q5W0Z9](#)

## Application Details

Application Notes: WB: 1:1000. IHC-P: 1:10~50

Restrictions: For Research Use only

## Handling

Format: Liquid

Buffer: Purified polyclonal antibody supplied in PBS with 0.09 % (W/V) sodium azide.

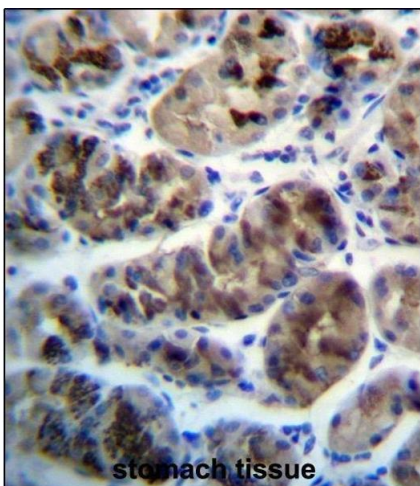
Preservative: Sodium azide

Precaution of Use: This product contains Sodium azide: a POISONOUS AND HAZARDOUS SUBSTANCE which should be handled by trained staff only.

Storage: 4 °C, -20 °C

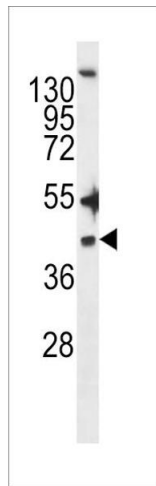
Expiry Date: 6 months

## Images



### Immunohistochemistry (Paraffin-embedded Sections)

**Image 1.** ZDHHC20 Antibody (N-term) (ABIN657278 and ABIN2846367) immunohistochemistry analysis in formalin fixed and paraffin embedded human stomach tissue followed by peroxidase conjugation of the secondary antibody and DAB staining. This data demonstrates the use of ZDHHC20 Antibody (N-term) for immunohistochemistry. Clinical relevance has not been evaluated.



### Western Blotting

**Image 2.** ZDHHC20 Antibody (N-term) (ABIN657278 and ABIN2846367) western blot analysis in NCI- cell line lysates (35 µg/lane). This demonstrates the ZDHHC20 antibody detected the ZDHHC20 protein (arrow).