



[Go to Product page](#)

Datasheet for ABIN657282

anti-WSCD2 antibody (C-Term)

1 Image

Overview

| | |
|----------------------|-----------------------|
| Quantity: | 400 µL |
| Target: | WSCD2 |
| Binding Specificity: | AA 536-565, C-Term |
| Reactivity: | Human |
| Host: | Rabbit |
| Clonality: | Polyclonal |
| Application: | Western Blotting (WB) |

Product Details

| | |
|---------------|--|
| Immunogen: | This WSCD2 antibody is generated from rabbits immunized with a KLH conjugated synthetic peptide between 536-565 amino acids from the C-terminal region of human WSCD2. |
| Clone: | RB33560 |
| Isotype: | Ig Fraction |
| Purification: | This antibody is purified through a protein A column, followed by peptide affinity purification. |

Target Details

| | |
|-------------------|--|
| Target: | WSCD2 |
| Alternative Name: | WSCD2 (WSCD2 Products) |
| Background: | The specific function of this protein remains unknown. |
| Molecular Weight: | 63817 |

Target Details

NCBI Accession: [NP_055468](#)

UniProt: [Q2TBF2](#)

Application Details

Application Notes: WB: 1:1000

Restrictions: For Research Use only

Handling

Format: Liquid

Buffer: Purified polyclonal antibody supplied in PBS with 0.09 % (W/V) sodium azide.

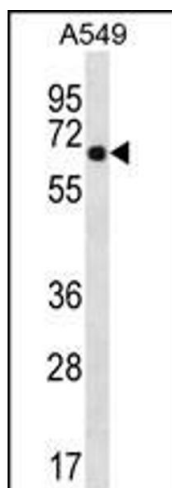
Preservative: Sodium azide

Precaution of Use: This product contains Sodium azide: a POISONOUS AND HAZARDOUS SUBSTANCE which should be handled by trained staff only.

Storage: 4 °C, -20 °C

Expiry Date: 6 months

Images



Western Blotting

Image 1. WSCD2 Antibody (C-term) (ABIN657282 and ABIN2837916) western blot analysis in A549 cell line lysates (35 µg/lane). This demonstrates the WSCD2 antibody detected the WSCD2 protein (arrow).