



[Go to Product page](#)

Datasheet for ABIN657284

## anti-WDR25 antibody (C-Term)

### 2 Images

#### Overview

Quantity:	400 µL
Target:	WDR25
Binding Specificity:	AA 444-473, C-Term
Reactivity:	Human
Host:	Rabbit
Clonality:	Polyclonal
Application:	Western Blotting (WB), Immunohistochemistry (Paraffin-embedded Sections) (IHC (p))

#### Product Details

Immunogen:	This WDR25 antibody is generated from rabbits immunized with a KLH conjugated synthetic peptide between 444-473 amino acids from the C-terminal region of human WDR25.
Clone:	RB33564
Isotype:	Ig Fraction
Predicted Reactivity:	M
Purification:	This antibody is purified through a protein A column, followed by peptide affinity purification.

#### Target Details

Target:	WDR25
Alternative Name:	WDR25 ( <a href="#">WDR25 Products</a> )
Background:	The specific function of this protein remains unknown.

## Target Details

NCBI Accession: [NP\\_001154948](#), [NP\\_078791](#)

UniProt: [Q64LD2](#)

## Application Details

Application Notes: WB: 1:1000. IHC-P: 1:10~50

Restrictions: For Research Use only

## Handling

Format: Liquid

Buffer: Purified polyclonal antibody supplied in PBS with 0.09 % (W/V) sodium azide.

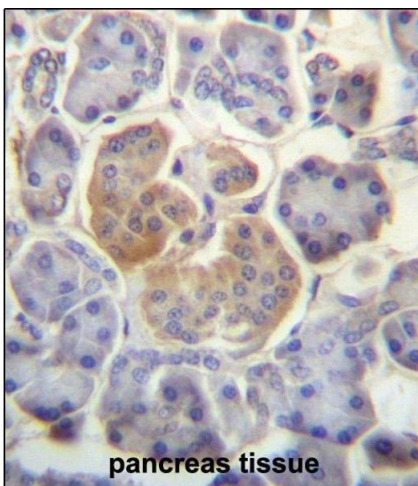
Preservative: Sodium azide

Precaution of Use: This product contains Sodium azide: a POISONOUS AND HAZARDOUS SUBSTANCE which should be handled by trained staff only.

Storage: 4 °C, -20 °C

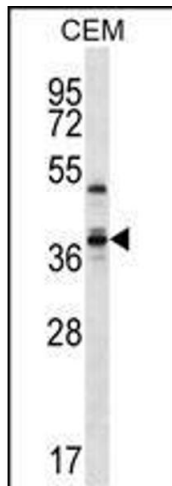
Expiry Date: 6 months

## Images



### Immunohistochemistry (Paraffin-embedded Sections)

**Image 1.** WDR25 Antibody (C-term) (ABIN657284 and ABIN2846372) immunohistochemistry analysis in formalin fixed and paraffin embedded human pancreas tissue followed by peroxidase conjugation of the secondary antibody and DAB staining. This data demonstrates the use of WDR25 Antibody (C-term) for immunohistochemistry. Clinical relevance has not been evaluated.



### Western Blotting

**Image 2.** WDR25 Antibody (C-term) (ABIN657284 and ABIN2846372) western blot analysis in CEM cell line lysates (35 µg/lane). This demonstrates the WDR25 antibody detected the WDR25 protein (arrow).