



[Go to Product page](#)

Datasheet for ABIN657287

anti-DHFRL1 antibody (AA 45-74)

2 Images

Overview

Quantity:	400 µL
Target:	DHFRL1
Binding Specificity:	AA 45-74
Reactivity:	Human
Host:	Rabbit
Clonality:	Polyclonal
Conjugate:	This DHFRL1 antibody is un-conjugated
Application:	Western Blotting (WB), Immunohistochemistry (Paraffin-embedded Sections) (IHC (p))

Product Details

Immunogen:	This DHFRL1 antibody is generated from rabbits immunized with a KLH conjugated synthetic peptide between 45-74 amino acids from the Central region of human DHFRL1.
Clone:	RB33570
Isotype:	Ig Fraction
Purification:	This antibody is purified through a protein A column, followed by peptide affinity purification.

Target Details

Target:	DHFRL1
Alternative Name:	DHFRL1 (DHFRL1 Products)
Background:	DHFRL1 may play a role in folate metabolism (Potential).

Target Details

Molecular Weight:	21620
NCBI Accession:	NP_001182572 , NP_789785
UniProt:	Q86XF0
Pathways:	Ribonucleoside Biosynthetic Process

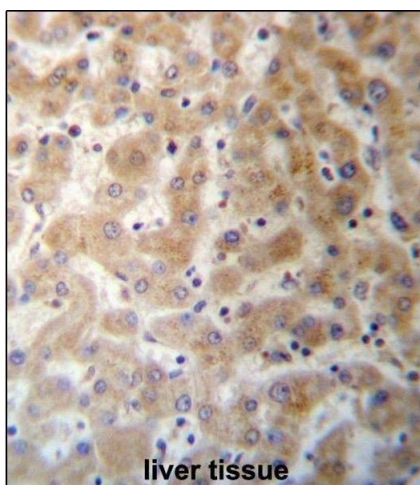
Application Details

Application Notes:	WB: 1:1000. IHC-P: 1:10~50
Restrictions:	For Research Use only

Handling

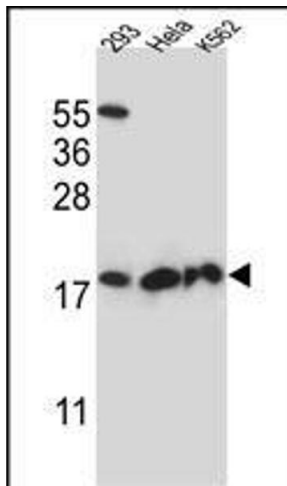
Format:	Liquid
Buffer:	Purified polyclonal antibody supplied in PBS with 0.09 % (W/V) sodium azide.
Preservative:	Sodium azide
Precaution of Use:	This product contains Sodium azide: a POISONOUS AND HAZARDOUS SUBSTANCE which should be handled by trained staff only.
Storage:	4 °C,-20 °C
Expiry Date:	6 months

Images



Immunohistochemistry (Paraffin-embedded Sections)

Image 1. DHFRL1 Antibody (Center) (ABIN657287 and ABIN2846374) immunohistochemistry analysis in formalin fixed and paraffin embedded human liver tissue followed by peroxidase conjugation of the secondary antibody and DAB staining. This data demonstrates the use of DHFRL1 Antibody (Center) for immunohistochemistry. Clinical relevance has not been evaluated.



Western Blotting

Image 2. DHFRL1 Antibody (Center) (ABIN657287 and ABIN2846374) western blot analysis in 293,HeLa,K562 cell line lysates (35 µg/lane).This demonstrates the DHFRL1 antibody detected the DHFRL1 protein (arrow).