

Datasheet for ABIN657292
anti-CLEC7A antibody (N-Term)[Go to Product page](#)

2 Images

Overview

| | |
|----------------------|--|
| Quantity: | 400 µL |
| Target: | CLEC7A |
| Binding Specificity: | AA 70-98, N-Term |
| Reactivity: | Human |
| Host: | Rabbit |
| Clonality: | Polyclonal |
| Conjugate: | This CLEC7A antibody is un-conjugated |
| Application: | Western Blotting (WB), Immunohistochemistry (Paraffin-embedded Sections) (IHC (p)) |

Product Details

| | |
|---------------|--|
| Immunogen: | This CLEC7A antibody is generated from rabbits immunized with a KLH conjugated synthetic peptide between 70-98 amino acids from the N-terminal region of human CLEC7A. |
| Clone: | RB30231 |
| Isotype: | Ig Fraction |
| Purification: | This antibody is purified through a protein A column, followed by peptide affinity purification. |

Target Details

| | |
|-------------------|--|
| Target: | CLEC7A |
| Alternative Name: | CLEC7A (CLEC7A Products) |
| Background: | This gene encodes a member of the C-type lectin/C-type lectin-like domain (CTL/CTLD) |

Target Details

superfamily. The encoded glycoprotein is a small type II membrane receptor with an extracellular C-type lectin-like domain fold and a cytoplasmic domain with an immunoreceptor tyrosine-based activation motif. It functions as a pattern-recognition receptor that recognizes a variety of beta-1,3-linked and beta-1,6-linked glucans from fungi and plants, and in this way plays a role in innate immune response. Alternate transcriptional splice variants, encoding different isoforms, have been characterized. This gene is closely linked to other CTL/CTLD superfamily members on chromosome 12p13 in the natural killer gene complex region.

Molecular Weight: 27627

NCBI Accession: [NP_072092](#), [NP_922938](#), [NP_922939](#), [NP_922940](#), [NP_922941](#), [NP_922945](#)

UniProt: [Q9BXN2](#)

Pathways: [Activation of Innate immune Response](#)

Application Details

Application Notes: WB: 1:1000. IHC-P: 1:10~50

Restrictions: For Research Use only

Handling

Format: Liquid

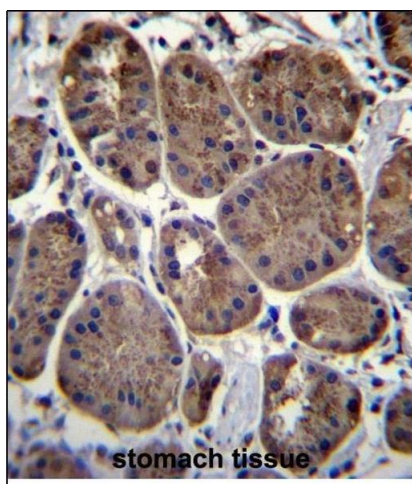
Buffer: Purified polyclonal antibody supplied in PBS with 0.09 % (W/V) sodium azide.

Preservative: Sodium azide

Precaution of Use: This product contains Sodium azide: a POISONOUS AND HAZARDOUS SUBSTANCE which should be handled by trained staff only.

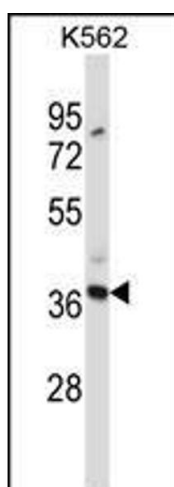
Storage: 4 °C,-20 °C

Expiry Date: 6 months



Immunohistochemistry (Paraffin-embedded Sections)

Image 1. CLEC7A Antibody (N-term) (ABIN657292 and ABIN2846377) immunohistochemistry analysis in formalin fixed and paraffin embedded human stomach tissue followed by peroxidase conjugation of the secondary antibody and DAB staining. This data demonstrates the use of CLEC7A Antibody (N-term) for immunohistochemistry. Clinical relevance has not been evaluated.



Western Blotting

Image 2. CLEC7A Antibody (N-term) (ABIN657292 and ABIN2846377) western blot analysis in K562 cell line lysates (35 µg/lane). This demonstrates the CLEC7A antibody detected the CLEC7A protein (arrow).