

Datasheet for ABIN657293
anti-IL1RL2 antibody (AA 257-286)

2 Images

[Go to Product page](#)

Overview

Quantity:	400 µL
Target:	IL1RL2
Binding Specificity:	AA 257-286
Reactivity:	Human
Host:	Rabbit
Clonality:	Polyclonal
Application:	Western Blotting (WB), Flow Cytometry (FACS)

Product Details

Immunogen:	This IL1RL2 antibody is generated from rabbits immunized with a KLH conjugated synthetic peptide between 257-286 amino acids from the Central region of human IL1RL2.
Clone:	RB30246
Isotype:	Ig Fraction
Purification:	This antibody is purified through a protein A column, followed by peptide affinity purification.

Target Details

Target:	IL1RL2
Alternative Name:	IL1RL2 (IL1RL2 Products)
Background:	The protein encoded by this gene is a member of the interleukin 1 receptor family. An experiment with transient gene expression demonstrated that this receptor was incapable of binding to interleukin 1 alpha and interleukin 1 beta with high affinity. This gene and four other

Target Details

interleukin 1 receptor family genes, including interleukin 1 receptor, type I (IL1R1), interleukin 1 receptor, type II (IL1R2), interleukin 1 receptor-like 1 (IL1RL1), and interleukin 18 receptor 1 (IL18R1), form a cytokine receptor gene cluster in a region mapped to chromosome 2q12. [provided by RefSeq].

Molecular Weight: 65405

NCBI Accession: [NP_003845](#)

UniProt: [Q9HB29](#)

Application Details

Application Notes: WB: 1:8000. FC: 1:25

Restrictions: For Research Use only

Handling

Format: Liquid

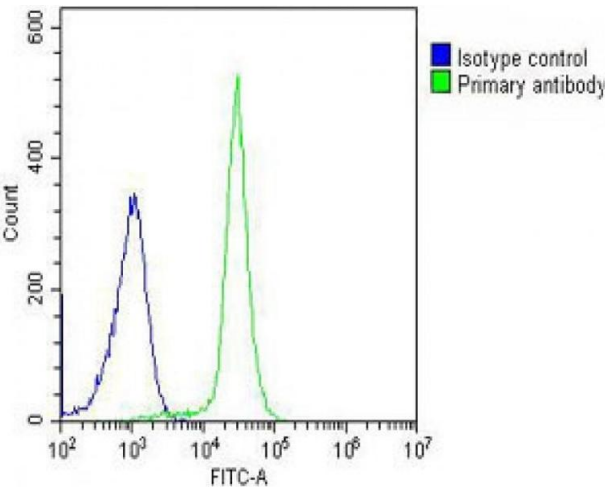
Buffer: Purified polyclonal antibody supplied in PBS with 0.09 % (W/V) sodium azide.

Preservative: Sodium azide

Precaution of Use: This product contains Sodium azide: a POISONOUS AND HAZARDOUS SUBSTANCE which should be handled by trained staff only.

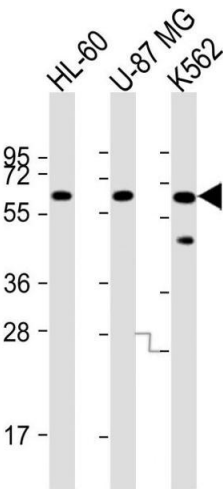
Storage: 4 °C, -20 °C

Expiry Date: 6 months



Flow Cytometry

Image 1. Overlay histogram showing K562 cells stained with (ABIN657293 and ABIN2846379) (green line). The cells were fixed with 2 % paraformaldehyde (10 min). The cells were then incubated in 2 % bovine serum albumin to block non-specific protein-protein interactions followed by the antibody ((ABIN657293 and ABIN2846379), 1:25 dilution) for 60 min at 37 °C. The secondary antibody used was Goat-Anti-Rabbit IgG, DyLight® 488 Conjugated Highly Cross-Adsorbed(OH191631) at 1/200 dilution for 40 min at 37 °C. Isotype control antibody (blue line) was rabbit IgG (1 µg/1x10⁶ cells) used under the same conditions. Acquisition of >10,000 events was performed.



Western Blotting

Image 2. All lanes : Anti-IL1RL2 Antibody (Center) at 1:8000 dilution Lane 1: HL-60 whole cell lysate Lane 2: U-87 MG whole cell lysate Lane 3: K562 whole cell lysate Lysates/proteins at 20 µg per lane. Secondary Goat Anti-Rabbit IgG, (H+L), Peroxidase conjugated at 1/10000 dilution. Predicted band size : 65 kDa Blocking/Dilution buffer: 5 % NFDM/TBST.