



[Go to Product page](#)

Datasheet for ABIN657297
anti-SLIT1 antibody (N-Term)

2 Images

Overview

Quantity:	400 µL
Target:	SLIT1
Binding Specificity:	AA 84-113, N-Term
Reactivity:	Mouse
Host:	Rabbit
Clonality:	Polyclonal
Conjugate:	This SLIT1 antibody is un-conjugated
Application:	Western Blotting (WB), Immunohistochemistry (Paraffin-embedded Sections) (IHC (p))

Product Details

Immunogen:	This SLIT1 antibody is generated from rabbits immunized with a KLH conjugated synthetic peptide between 84-113 amino acids from the N-terminal region of human SLIT1.
Clone:	RB32325
Isotype:	Ig Fraction
Predicted Reactivity:	Rat
Purification:	This antibody is purified through a protein A column, followed by peptide affinity purification.

Target Details

Target:	SLIT1
Alternative Name:	SLIT1 (SLIT1 Products)

Target Details

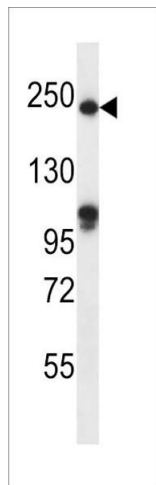
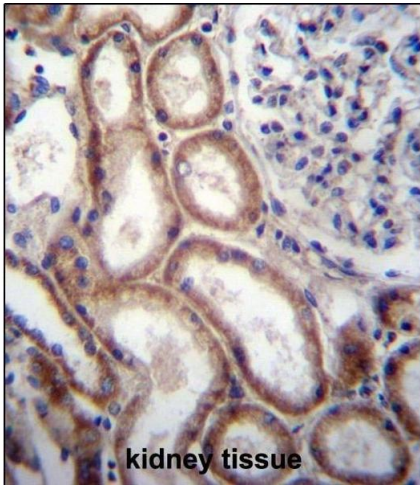
Background:	Thought to act as molecular guidance cue in cellular migration, and function appears to be mediated by interaction with roundabout homolog receptors. During neural development involved in axonal navigation at the ventral midline of the neural tube and projection of axons to different regions (By similarity). SLIT1 and SLIT2 together seem to be essential for midline guidance in the forebrain by acting as repulsive signal preventing inappropriate midline crossing by axons projecting from the olfactory bulb.
Molecular Weight:	167926
NCBI Accession:	NP_003052
UniProt:	O75093
Pathways:	Regulation of Cell Size

Application Details

Application Notes:	WB: 1:1000. IHC-P: 1:10~50
Restrictions:	For Research Use only

Handling

Format:	Liquid
Buffer:	Purified polyclonal antibody supplied in PBS with 0.09 % (W/V) sodium azide.
Preservative:	Sodium azide
Precaution of Use:	This product contains Sodium azide: a POISONOUS AND HAZARDOUS SUBSTANCE which should be handled by trained staff only.
Storage:	4 °C, -20 °C
Expiry Date:	6 months



Immunohistochemistry (Paraffin-embedded Sections)

Image 1. SLIT1 Antibody (N-term) (ABIN657297 and ABIN2846382) immunohistochemistry analysis in formalin fixed and paraffin embedded human kidney tissue followed by peroxidase conjugation of the secondary antibody and DAB staining. This data demonstrates the use of SLIT1 Antibody (N-term) for immunohistochemistry. Clinical relevance has not been evaluated.

Western Blotting

Image 2. SLIT1 Antibody (N-term) (ABIN657297 and ABIN2846382) western blot analysis in mouse heart tissue lysates (35 µg/lane). This demonstrates the SLIT1 antibody detected the SLIT1 protein (arrow).