

Datasheet for ABIN657310  
**anti-TTC15 antibody (C-Term)**



[Go to Product page](#)

2 Images

### Overview

Quantity:	400 µL
Target:	TTC15
Binding Specificity:	AA 579-608, C-Term
Reactivity:	Human
Host:	Rabbit
Clonality:	Polyclonal
Conjugate:	This TTC15 antibody is un-conjugated
Application:	Western Blotting (WB), Immunohistochemistry (Paraffin-embedded Sections) (IHC (p))

### Product Details

Immunogen:	This TTC15 antibody is generated from rabbits immunized with a KLH conjugated synthetic peptide between 579-608 amino acids from the C-terminal region of human TTC15.
Clone:	RB32759
Isotype:	Ig Fraction
Predicted Reactivity:	M
Purification:	This antibody is purified through a protein A column, followed by peptide affinity purification.

### Target Details

Target:	TTC15
Alternative Name:	TTC15 ( <a href="#">TTC15 Products</a> )

## Target Details

Background:	TTC15 contains 4 TPR repeats.
Molecular Weight:	79375
NCBI Accession:	<a href="#">NP_057114</a>
UniProt:	<a href="#">Q8WVT3</a>

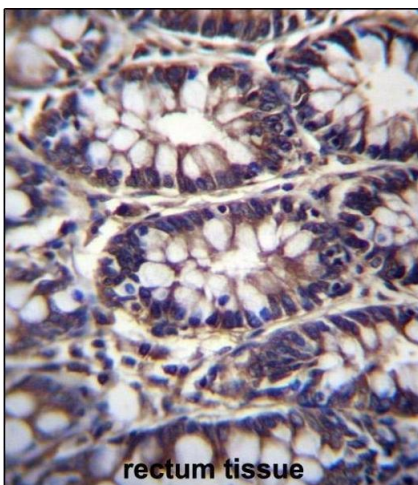
## Application Details

Application Notes:	WB: 1:1000. IHC-P: 1:10~50
Restrictions:	For Research Use only

## Handling

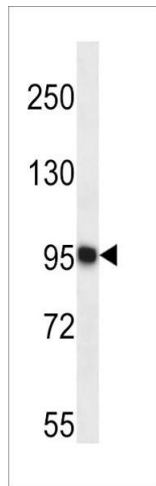
Format:	Liquid
Buffer:	Purified polyclonal antibody supplied in PBS with 0.09 % (W/V) sodium azide.
Preservative:	Sodium azide
Precaution of Use:	This product contains Sodium azide: a POISONOUS AND HAZARDOUS SUBSTANCE which should be handled by trained staff only.
Storage:	4 °C,-20 °C
Expiry Date:	6 months

## Images



### Immunohistochemistry (Paraffin-embedded Sections)

**Image 1.** TTC15 Antibody (C-term) (ABIN657310 and ABIN2846388) immunohistochemistry analysis in formalin fixed and paraffin embedded human rectum tissue followed by peroxidase conjugation of the secondary antibody and DAB staining. This data demonstrates the use of TTC15 Antibody (C-term) for immunohistochemistry. Clinical relevance has not been evaluated.



### Western Blotting

**Image 2.** TTC15 Antibody (C-term) (ABIN657310 and ABIN2846388) western blot analysis in K562 cell line lysates (35 µg/lane). This demonstrates the TTC15 antibody detected the TTC15 protein (arrow).