

Datasheet for ABIN657323
anti-RPL3 antibody (AA 224-251)[Go to Product page](#)

2 Images

Overview

Quantity:	400 µL
Target:	RPL3
Binding Specificity:	AA 224-251
Reactivity:	Human
Host:	Rabbit
Clonality:	Polyclonal
Conjugate:	This RPL3 antibody is un-conjugated
Application:	Western Blotting (WB), Immunohistochemistry (Paraffin-embedded Sections) (IHC (p))

Product Details

Immunogen:	This RPL3 antibody is generated from rabbits immunized with a KLH conjugated synthetic peptide between 224-251 amino acids from the Central region of human RPL3.
Clone:	RB33092
Isotype:	Ig Fraction
Predicted Reactivity:	B, Pr, M, Pig, Rat, Y
Purification:	This antibody is purified through a protein A column, followed by peptide affinity purification.

Target Details

Target:	RPL3
Alternative Name:	RPL3 (RPL3 Products)

Target Details

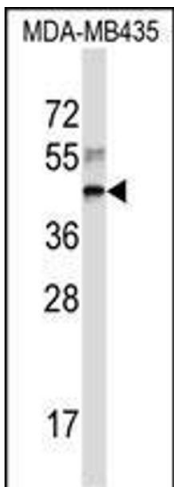
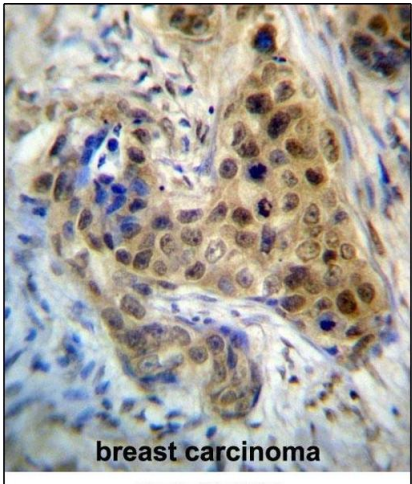
Background:	Ribosomes, the complexes that catalyze protein synthesis, consist of a small 40S subunit and a large 60S subunit. Together these subunits are composed of 4 RNA species and approximately 80 structurally distinct proteins. This gene encodes a ribosomal protein that is a component of the 60S subunit. The protein belongs to the L3P family of ribosomal proteins and it is located in the cytoplasm. The protein can bind to the HIV-1 TAR mRNA, and it has been suggested that the protein contributes to tat-mediated transactivation. This gene is co-transcribed with several small nucleolar RNA genes, which are located in several of this gene's introns. Alternate transcriptional splice variants, encoding different isoforms, have been characterized. As is typical for genes encoding ribosomal proteins, there are multiple processed pseudogenes of this gene dispersed through the genome. [provided by RefSeq].
Molecular Weight:	46109
NCBI Accession:	NP_000958
UniProt:	P39023

Application Details

Application Notes:	WB: 1:1000. IHC-P: 1:10~50
Restrictions:	For Research Use only

Handling

Format:	Liquid
Buffer:	Purified polyclonal antibody supplied in PBS with 0.09 % (W/V) sodium azide.
Preservative:	Sodium azide
Precaution of Use:	This product contains Sodium azide: a POISONOUS AND HAZARDOUS SUBSTANCE which should be handled by trained staff only.
Storage:	4 °C,-20 °C
Expiry Date:	6 months



Immunohistochemistry (Paraffin-embedded Sections)

Image 1. RPL3 Antibody (Center) (ABIN657323 and ABIN2846397) immunohistochemistry analysis in formalin fixed and paraffin embedded human breast carcinoma followed by peroxidase conjugation of the secondary antibody and DAB staining. This data demonstrates the use of RPL3 Antibody (Center) for immunohistochemistry. Clinical relevance has not been evaluated.

Western Blotting

Image 2. RPL3 Antibody (Center) (ABIN657323 and ABIN2846397) western blot analysis in MDA-M cell line lysates (35 µg/lane). This demonstrates the RPL3 antibody detected the RPL3 protein (arrow).