



[Go to Product page](#)

Datasheet for ABIN657350
anti-Cathepsin Q antibody (AA 192-221)

1 Image

Overview

Quantity:	400 µL
Target:	Cathepsin Q (CTSQ)
Binding Specificity:	AA 192-221
Reactivity:	Mouse
Host:	Rabbit
Clonality:	Polyclonal
Conjugate:	This Cathepsin Q antibody is un-conjugated
Application:	Western Blotting (WB)

Product Details

Immunogen:	This cathepsin Q antibody is generated from rabbits immunized with a KLH conjugated synthetic peptide between 192-221 amino acids from human cathepsin Q.
Clone:	RB33804
Isotype:	Ig Fraction
Purification:	This antibody is purified through a protein A column, followed by peptide affinity purification.

Target Details

Target:	Cathepsin Q (CTSQ)
Alternative Name:	cathepsin Q (CTSQ Products)
Molecular Weight:	38705

Target Details

UniProt: [Q91ZF4](#)

Application Details

Application Notes: WB: 1:1000

Restrictions: For Research Use only

Handling

Format: Liquid

Buffer: Purified polyclonal antibody supplied in PBS with 0.09 % (W/V) sodium azide.

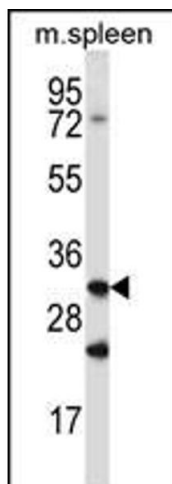
Preservative: Sodium azide

Precaution of Use: This product contains Sodium azide: a POISONOUS AND HAZARDOUS SUBSTANCE which should be handled by trained staff only.

Storage: 4 °C,-20 °C

Expiry Date: 6 months

Images



Western Blotting

Image 1. cathepsin Q Antibody (ABIN657350 and ABIN2837833) western blot analysis in mouse spleen tissue lysates (35 µg/lane). This demonstrates the cathepsin Q antibody detected the cathepsin Q protein (arrow).