



[Go to Product page](#)

Datasheet for ABIN657353
anti-CD1c antibody (C-Term)

2 Images

Overview

Quantity:	400 µL
Target:	CD1c (CD1C)
Binding Specificity:	AA 226-253, C-Term
Reactivity:	Human
Host:	Rabbit
Clonality:	Polyclonal
Application:	Western Blotting (WB)

Product Details

Immunogen:	This CD1C antibody is generated from rabbits immunized with a KLH conjugated synthetic peptide between 226-253 amino acids from the C-terminal region of human CD1C.
Clone:	RB33845
Isotype:	Ig Fraction
Purification:	This antibody is purified through a protein A column, followed by peptide affinity purification.

Target Details

Target:	CD1c (CD1C)
Alternative Name:	CD1C (CD1C Products)
Background:	This gene encodes a member of the CD1 family of transmembrane glycoproteins, which are structurally related to the major histocompatibility complex (MHC) proteins and form heterodimers with beta-2-microglobulin. The CD1 proteins mediate the presentation of primarily

Target Details

lipid and glycolipid antigens of self or microbial origin to T cells. The human genome contains five CD1 family genes organized in a cluster on chromosome 1. The CD1 family members are thought to differ in their cellular localization and specificity for particular lipid ligands. The protein encoded by this gene is broadly distributed throughout the endocytic system via a tyrosine-based motif in the cytoplasmic tail. Alternatively spliced transcript variants of this gene have been observed, but their full-length nature is not known.

Molecular Weight: 37654

NCBI Accession: [NP_001756](#)

UniProt: [P29017](#)

Application Details

Application Notes: WB: 1:1000. WB: 1:1000

Restrictions: For Research Use only

Handling

Format: Liquid

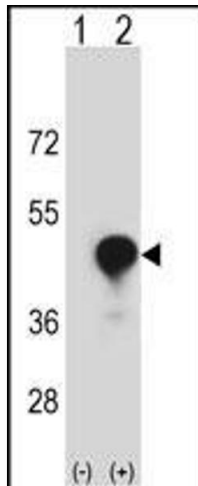
Buffer: Purified polyclonal antibody supplied in PBS with 0.09 % (W/V) sodium azide.

Preservative: Sodium azide

Precaution of Use: This product contains Sodium azide: a POISONOUS AND HAZARDOUS SUBSTANCE which should be handled by trained staff only.

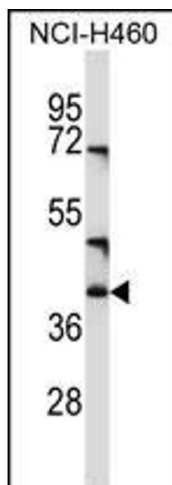
Storage: 4 °C,-20 °C

Expiry Date: 6 months



Western Blotting

Image 1. Western blot analysis of CD1C (arrow) using rabbit polyclonal CD1C Antibody (C-term) (ABIN657353 and ABIN2837919). 293 cell lysates (2 µg/lane) either nontransfected (Lane 1) or transiently transfected (Lane 2) with the CD1C gene.



Western Blotting

Image 2. CD1C Antibody (C-term) (ABIN657353 and ABIN2837919) western blot analysis in NCI- cell line lysates (35 µg/lane). This demonstrates the CD1C antibody detected the CD1C protein (arrow).