

Datasheet for ABIN657358
anti-ERV3 antibody (C-Term)[Go to Product page](#)

2 Images

Overview

Quantity:	400 µL
Target:	ERV3 (ERV3-1)
Binding Specificity:	AA 445-474, C-Term
Reactivity:	Human
Host:	Rabbit
Clonality:	Polyclonal
Application:	Western Blotting (WB), Immunohistochemistry (Paraffin-embedded Sections) (IHC (p))

Product Details

Immunogen:	This ERV3 antibody is generated from rabbits immunized with a KLH conjugated synthetic peptide between 445-474 amino acids from the C-terminal region of human ERV3.
Clone:	RB27275
Isotype:	Ig Fraction
Purification:	This antibody is purified through a protein A column, followed by peptide affinity purification.

Target Details

Target:	ERV3 (ERV3-1)
Alternative Name:	ERV3 (ERV3-1 Products)
Background:	The human genome includes many retroelements including the human endogenous retroviruses (HERVs). ERV3, one of the most studied HERVs, is thought to have integrated 30 to 40 million years ago and is present in higher primates with the exception of gorillas. Taken

Target Details

together, the observation of genome conservation, the detection of transcript expression, and the presence of conserved ORFs is circumstantial evidence for a functional role. A functional role is also suggested by the observation that downregulation of ERV3 is reported in choriocarcinoma. [provided by RefSeq].

Molecular Weight: 67942

Gene ID: 2086

NCBI Accession: [NP_001007254](#)

UniProt: [Q14264](#)

Application Details

Application Notes: WB: 1:1000. IHC-P: 1:10~50

Restrictions: For Research Use only

Handling

Format: Liquid

Buffer: Purified polyclonal antibody supplied in PBS with 0.09 % (W/V) sodium azide.

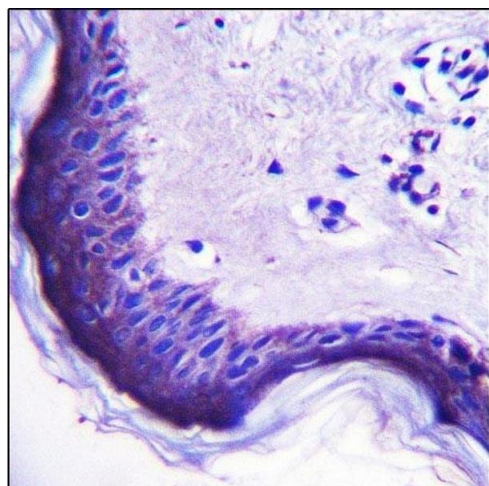
Preservative: Sodium azide

Precaution of Use: This product contains Sodium azide: a POISONOUS AND HAZARDOUS SUBSTANCE which should be handled by trained staff only.

Storage: 4 °C, -20 °C

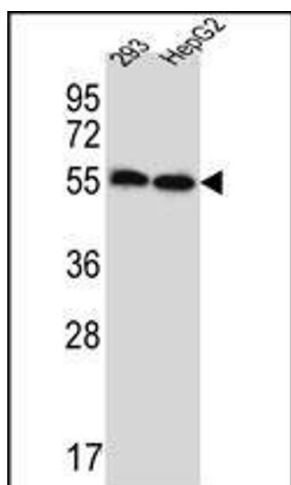
Storage Comment: ERV3 Antibody (C-Term) can be refrigerated at 2-8 °C for up to 6 months. For long term storage, place the at -20 °C.

Expiry Date: 6 months



Immunohistochemistry (Paraffin-embedded Sections)

Image 1. ERV3 Antibody (C-Term) (ABIN657358 and ABIN2846408) immunohistochemistry analysis in formalin fixed and paraffin embedded human skin tissue followed by peroxidase conjugation of the secondary antibody and DAB staining. This data demonstrates the use of ERV3 Antibody (C-Term) for immunohistochemistry. Clinical relevance has not been evaluated.



Western Blotting

Image 2. ERV3 Antibody (C-Term) (ABIN657358 and ABIN2846408) western blot analysis in 293, HepG2 cell line lysates (35 µg/lane). This demonstrates the ERV3 antibody detected the ERV3 protein (arrow).