

Datasheet for ABIN657365
anti-alpha KGDHC antibody (C-Term)

2 Images

[Go to Product page](#)

Overview

Quantity:	400 µL
Target:	alpha KGDHC (alphaKGDHC)
Binding Specificity:	AA 381-410, C-Term
Reactivity:	Human
Host:	Rabbit
Clonality:	Polyclonal
Application:	Western Blotting (WB), Immunohistochemistry (Paraffin-embedded Sections) (IHC (p))

Product Details

Immunogen:	This OGDH antibody is generated from rabbits immunized with a KLH conjugated synthetic peptide between 381-410 amino acids from the C-terminal region of human OGDH.
Clone:	RB32469
Isotype:	Ig Fraction
Purification:	This antibody is purified through a protein A column, followed by peptide affinity purification.

Target Details

Target:	alpha KGDHC (alphaKGDHC)
Alternative Name:	OGDH (alphaKGDHC Products)
Background:	This gene encodes one subunit of the 2-oxoglutarate dehydrogenase complex. This complex catalyzes the overall conversion of 2-oxoglutarate (alpha-ketoglutarate) to succinyl-CoA and CO(2) during the Krebs cycle. The protein is located in the mitochondrial matrix and uses

Target Details

thiamine pyrophosphate as a cofactor. A congenital deficiency in 2-oxoglutarate dehydrogenase activity is believed to lead to hypotonia, metabolic acidosis, and hyperlactatemia. Alternative splicing results in multiple transcript variants encoding distinct isoforms.

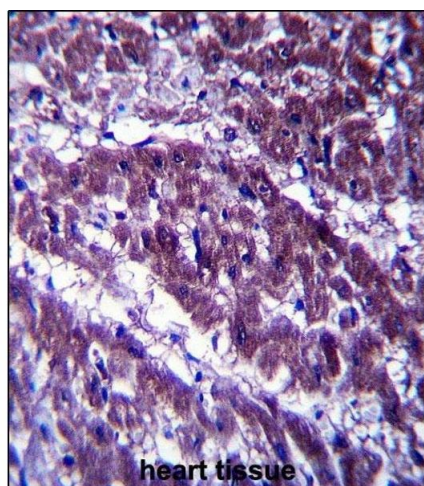
Molecular Weight:	115935
Gene ID:	4967
NCBI Accession:	NP_001003941 , NP_001158508 , NP_002532
UniProt:	Q02218

Application Details

Application Notes:	WB: 1:1000. IHC-P: 1:10~50
Restrictions:	For Research Use only

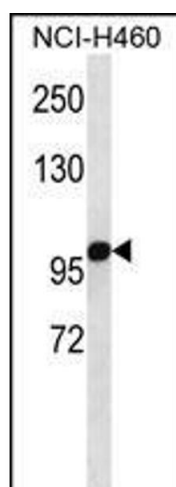
Handling

Format:	Liquid
Buffer:	Purified polyclonal antibody supplied in PBS with 0.09 % (W/V) sodium azide.
Preservative:	Sodium azide
Precaution of Use:	This product contains Sodium azide: a POISONOUS AND HAZARDOUS SUBSTANCE which should be handled by trained staff only.
Storage:	4 °C,-20 °C
Storage Comment:	OGDH Antibody (C-term) can be refrigerated at 2-8 °C for up to 6 months. For long term storage, place the at -20 °C.
Expiry Date:	6 months



Immunohistochemistry (Paraffin-embedded Sections)

Image 1. OGDH Antibody (C-term) (ABIN657365 and ABIN2846412) immunohistochemistry analysis in formalin fixed and paraffin embedded human heart tissue followed by peroxidase conjugation of the secondary antibody and DAB staining. This data demonstrates the use of OGDH Antibody (C-term) for immunohistochemistry. Clinical relevance has not been evaluated.



Western Blotting

Image 2. OGDH Antibody (C-term) (ABIN657365 and ABIN2846412) western blot analysis in NCI- cell line lysates (35 µg/lane). This demonstrates the OGDH antibody detected the OGDH protein (arrow).