

Datasheet for ABIN657367

anti-Myomesin 1 antibody (AA 904-933)**2** Images[Go to Product page](#)

Overview

Quantity:	400 µL
Target:	Myomesin 1 (MYOM1)
Binding Specificity:	AA 904-933
Reactivity:	Human
Host:	Rabbit
Clonality:	Polyclonal
Conjugate:	This Myomesin 1 antibody is un-conjugated
Application:	Western Blotting (WB), Immunohistochemistry (Paraffin-embedded Sections) (IHC (p))

Product Details

Immunogen:	This MYOM1 antibody is generated from rabbits immunized with a KLH conjugated synthetic peptide between 904-933 amino acids from the Central region of human MYOM1.
Clone:	RB32522
Isotype:	Ig Fraction
Purification:	This antibody is purified through a protein A column, followed by peptide affinity purification.

Target Details

Target:	Myomesin 1 (MYOM1)
Alternative Name:	MYOM1 (MYOM1 Products)
Background:	The giant protein titin, together with its associated proteins, interconnects the major structure

Target Details

of sarcomeres, the M bands and Z discs. The C-terminal end of the titin string extends into the M line, where it binds tightly to M-band constituents of apparent molecular masses of 190 kD (myomesin 1) and 165 kD (myomesin 2). This protein, myomesin 1, like myomesin 2, titin, and other myofibrillar proteins contains structural modules with strong homology to either fibronectin type III (motif I) or immunoglobulin C2 (motif II) domains. Myomesin 1 and myomesin 2 each have a unique N-terminal region followed by 12 modules of motif I or motif II, in the arrangement II-II-I-I-I-I-I-II-II-II-II. The two proteins share 50 % sequence identity in this repeat-containing region. The head structure formed by these 2 proteins on one end of the titin string extends into the center of the M band. The integrating structure of the sarcomere arises from muscle-specific members of the superfamily of immunoglobulin-like proteins. Alternatively spliced transcript variants encoding different isoforms have been identified.

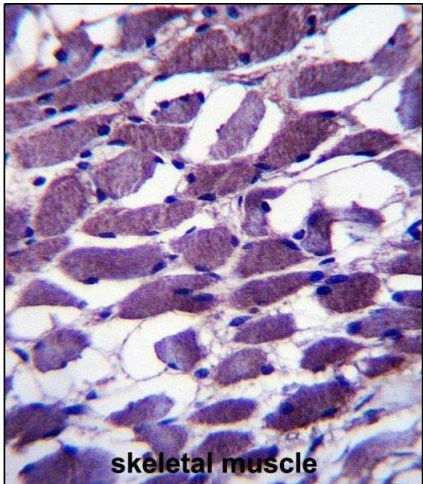
Molecular Weight:	187627
Gene ID:	8736
NCBI Accession:	NP_003794 , NP_062830
UniProt:	P52179

Application Details

Application Notes:	WB: 1:1000. IHC-P: 1:10~50
Restrictions:	For Research Use only

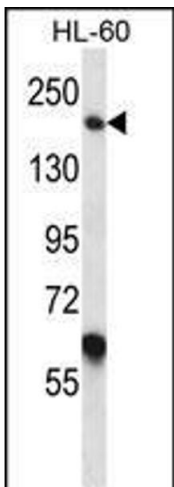
Handling

Format:	Liquid
Buffer:	Purified polyclonal antibody supplied in PBS with 0.09 % (W/V) sodium azide.
Preservative:	Sodium azide
Precaution of Use:	This product contains Sodium azide: a POISONOUS AND HAZARDOUS SUBSTANCE which should be handled by trained staff only.
Storage:	4 °C,-20 °C
Storage Comment:	MYOM1 Antibody (Center) can be refrigerated at 2-8 °C for up to 6 months. For long term storage, place the at -20 °C.
Expiry Date:	6 months



Immunohistochemistry (Paraffin-embedded Sections)

Image 1. MYOM1 Antibody (Center) (ABIN657367 and ABIN2846414) immunohistochemistry analysis in formalin fixed and paraffin embedded human skeletal muscle followed by peroxidase conjugation of the secondary antibody and DAB staining. This data demonstrates the use of MYOM1 Antibody (Center) for immunohistochemistry. Clinical relevance has not been evaluated.



Western Blotting

Image 2. MYOM1 Antibody (Center) (ABIN657367 and ABIN2846414) western blot analysis in HL-60 cell line lysates (35 µg/lane). This demonstrates the MYOM1 antibody detected the MYOM1 protein (arrow).