

Datasheet for ABIN657368

anti-Junctophilin 2 antibody (C-Term)[Go to Product page](#)**1** Image

Overview

Quantity:	400 µL
Target:	Junctophilin 2 (JPH2)
Binding Specificity:	AA 614-643, C-Term
Reactivity:	Human
Host:	Rabbit
Clonality:	Polyclonal
Conjugate:	This Junctophilin 2 antibody is un-conjugated
Application:	Western Blotting (WB)

Product Details

Immunogen:	This JPH2 antibody is generated from rabbits immunized with a KLH conjugated synthetic peptide between 614-643 amino acids from the C-terminal region of human JPH2.
Clone:	RB32526
Isotype:	Ig Fraction
Purification:	This antibody is purified through a protein A column, followed by peptide affinity purification.

Target Details

Target:	Junctophilin 2 (JPH2)
Alternative Name:	JPH2 (JPH2 Products)
Background:	Junctional complexes between the plasma membrane and endoplasmic/sarcoplasmic

Target Details

reticulum are a common feature of all excitable cell types and mediate cross talk between cell surface and intracellular ion channels. The protein encoded by this gene is a component of junctional complexes and is composed of a C-terminal hydrophobic segment spanning the endoplasmic/sarcoplasmic reticulum membrane and a remaining cytoplasmic domain that shows specific affinity for the plasma membrane. This gene is a member of the junctophilin gene family. Alternative splicing has been observed at this locus and two variants encoding distinct isoforms are described.

Molecular Weight: 74222

Gene ID: 57158

NCBI Accession: [NP_065166](#), [NP_787109](#)

UniProt: [Q9BR39](#)

Application Details

Application Notes: WB: 1:1000

Restrictions: For Research Use only

Handling

Format: Liquid

Buffer: Purified polyclonal antibody supplied in PBS with 0.09 % (W/V) sodium azide.

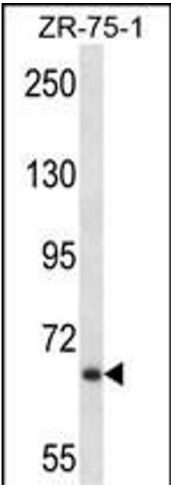
Preservative: Sodium azide

Precaution of Use: This product contains Sodium azide: a POISONOUS AND HAZARDOUS SUBSTANCE which should be handled by trained staff only.

Storage: 4 °C, -20 °C

Storage Comment: JPH2 Antibody (C-term) can be refrigerated at 2-8 °C for up to 6 months. For long term storage, place the at -20 °C.

Expiry Date: 6 months



Western Blotting

Image 1. JPH2 Antibody (C-term) (ABIN657368 and ABIN2846415) western blot analysis in ZR-75-1 cell line lysates (35 µg/lane). This demonstrates the JPH2 antibody detected the JPH2 protein (arrow).