

Datasheet for ABIN657381
anti-ARL8A antibody (AA 82-110)[Go to Product page](#)

2 Images

Overview

Quantity:	400 µL
Target:	ARL8A
Binding Specificity:	AA 82-110
Reactivity:	Human
Host:	Rabbit
Clonality:	Polyclonal
Conjugate:	This ARL8A antibody is un-conjugated
Application:	Western Blotting (WB), Immunohistochemistry (Paraffin-embedded Sections) (IHC (p))

Product Details

Immunogen:	This ARL8A antibody is generated from rabbits immunized with a KLH conjugated synthetic peptide between 82-110 amino acids from the Central region of human ARL8A.
Clone:	RB32929
Isotype:	Ig Fraction
Predicted Reactivity:	C, M
Purification:	This antibody is purified through a protein A column, followed by peptide affinity purification.

Target Details

Target:	ARL8A
Alternative Name:	ARL8A (ARL8A Products)

Target Details

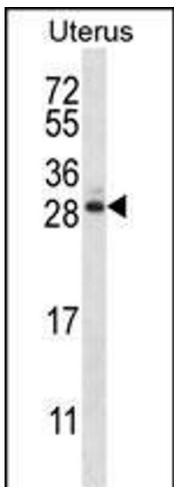
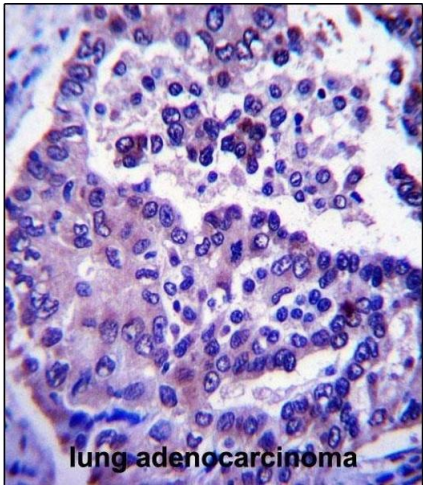
Background:	ARL8A may play a role in lysosomes motility. Alternatively, may play a role in chromosome segregation (By similarity).
Molecular Weight:	21416
Gene ID:	127829
NCBI Accession:	NP_001243058 , NP_620150
UniProt:	Q96BM9

Application Details

Application Notes:	WB: 1:1000. IHC-P: 1:10~50
Restrictions:	For Research Use only

Handling

Format:	Liquid
Buffer:	Purified polyclonal antibody supplied in PBS with 0.09 % (W/V) sodium azide.
Preservative:	Sodium azide
Precaution of Use:	This product contains Sodium azide: a POISONOUS AND HAZARDOUS SUBSTANCE which should be handled by trained staff only.
Storage:	4 °C,-20 °C
Storage Comment:	ARL8A Antibody (Center) can be refrigerated at 2-8 °C for up to 6 months. For long term storage, place the at -20 °C.
Expiry Date:	6 months



Immunohistochemistry (Paraffin-embedded Sections)

Image 1. ARL8A Antibody (Center) (ABIN657381 and ABIN2846426) immunohistochemistry analysis in formalin fixed and paraffin embedded human lung adenocarcinoma followed by peroxidase conjugation of the secondary antibody and DAB staining. This data demonstrates the use of ARL8A Antibody (Center) for immunohistochemistry. Clinical relevance has not been evaluated.

Western Blotting

Image 2. ARL8A Antibody (Center) (ABIN657381 and ABIN2846426) western blot analysis in human normal Uterus tissue lysates (35 µg/lane). This demonstrates the ARL8A antibody detected the ARL8A protein (arrow).